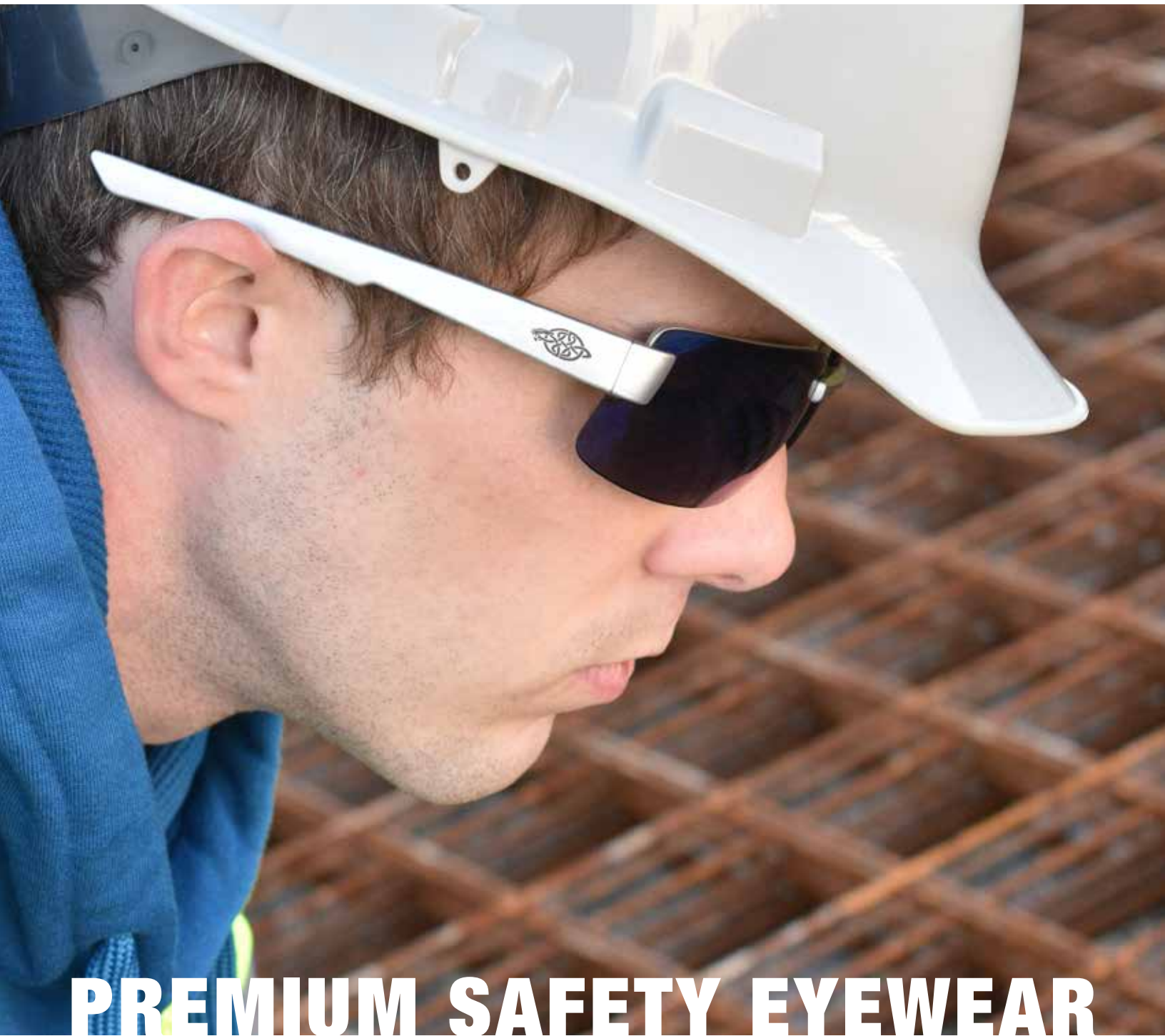




CROSSFIRE
by RADIANS



PREMIUM SAFETY EYEWEAR



WWW.CROSSFIRESAFETY.COM





PROTECTIVE EYEWEAR

Since the premium eyewear market is a multi-billion dollar market, it's apparent that millions of people have a self-expressive connection with their premium eyewear and place extreme importance on brand recognition. Brand recognition of eyewear goes beyond lifestyle and plays a serious role in the industrial markets because premium brands are a catalyst for compliance.

STANDARDS & TESTING



- Eyeglasses are NOT safety glasses unless both the lenses and frame are in compliance with the specifications for safety eyewear described in the ANSI Z87.1 standard.

STANDARD	IMPACT SPEED	CALIBER / SIZE	PROJECTILE
ANSI Z87 + High Velocity	150 feet / second	0.25 inch diameter steel ball (25 caliber)	
	45 meters / second		
High Mass Impact	17.6 oz / 50 in height	17.6 oz / 500 g pointed projectile dropped	
	500 g / 127cm height		



ICON LEGEND



Meets or Exceeds ANSI Z87.1+ Standards



Available with Scratch Resistant Hard Coat



Provides 99.9% UVA and UVB Protection



Provides enhanced vision by filtering damaging blue rays



Prevents lenses from fogging



Bifocal magnification



Meets CSA Z94.3 Standards



Provides protection against dust and debris



Can be worn over prescription eyewear



Adjust the length of temples



Polarized lens prevents glare



Customize the fit of the nosepiece



Adjust the lens angle



Adjust temples for the perfect fit

CATEGORIES

POLARIZED

Page 6



PREMIUM

Page 10



PERFORMANCE

Page 18



FOAM-LINED

Page 20



BIFOCAL

Page 26



OTG STYLE

Page 29



PINK FRAME

Page 30



PREMIUM EYEWEAR

Our approach to design affords the end user a seamless link between the latest in style and cutting edge technology.

- Advanced lens coatings for superior scratch resistant and anti-fog properties.
- High-end materials for polycarbonate lenses, rubber nose pieces and frames.
- Polarized and High Definition lens options for enhanced optical clarity.
- De-centered cut lenses to match the focal point with actual line of sight, again ensuring optical clarity.
- 99.9% UVA and UVB protection.
- Stylized lens colors and state-of-the-art frames that premium-brand consumers prefer.

FRAME TECHNOLOGY

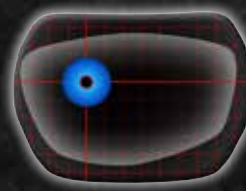
- TPR Technology increases the grip to keep glasses on your face.
- All polycarbonate lenses provide 99.9% UV protection and comply with ANSI Z87.1+ standards.
- Hard Coat provides scratch resistance.
- Flexible and durable Nylon materials on frames provide added durability and protection.



ENHANCED OPTICAL CLARITY



The optically correct portion of the lens blank is pinpointed and marked at the focal point.



The de-centered lens is cut to match the focal point with actual line of sight, ensuring optical clarity.

HD LENS TECHNOLOGY



Crossfire's High Definition (HD) Lens Technology provides enhanced vision by filtering the most damaging blue rays and allowing for more transmission of the High Definition light spectrum.



PERFORMANCE EYEWEAR

Just as premium eyewear has a role in today's safety programs, performance protective eyewear meets a variety of needs at jobsites around the globe, especially when you have to protect hundreds of workers.

All of our safety glasses are ANSI Z87.1+ certified and have many features that provide comfort and protection, including 99.9% UVA and UVB protection.

Plus, you will find numerous styles, lens colors, and price points to satisfy a variety of budgets and safety programs.

POLARIZED LENSES



The sun's rays reflect off of surfaces such as sand, water, and snow causing glare. Crossfire's polarized lens technology prevents glare by filtering out the reflected bent light and glare resulting in enhanced vision in harsh environments.





CROSSFIRE
by RADIANS

POLARIZED EYEWEAR

WHY CROSSFIRE® POLARIZED?

Crossfire® Polarized Safety Eyewear provides you with the availability of multiple styles and lens colors. Ranging from Blue Mirror to HD Brown lens options, we have eliminated the inconvenience of keeping up with multiple polarized glasses as you go from the jobsite to your favorite outdoor activity.

ES4

Adjustable Rubber Nosepiece for added comfort
Dual Mold, Rubber Temple Grips for better stability



21427 | Frame: Crystal Black
| Lens: Silver Mirror Polarized



All glasses meet ANSI Z87.1+ standards, protect against 99.9% of harmful UV rays and include a hard coat polycarbonate lens to protect against scratches.

POLARIZED



ES5

Rubber Nosepiece for all day comfort
Dual Mold, Rubber Temple Grips for better stability



291113 | Frame: Crystal Brown
Lens: HD Brown Polarized

ES5 bifocal



2941415



PART NUMBER	Frame Color	Lens
2941415	● Crystal Black	Polarized Smoke 1.5 Diopter
2941420	● Crystal Black	Polarized Smoke 2.0 Diopter
2941425	● Crystal Black	Polarized Smoke 2.5 Diopter

ES6

Inlaid Temple Grips for better stability & comfort
Soft Rubber Nosepiece for added comfort



440613 | Frame: Matte Black
Lens: Brown Polarized



Custom Imprinting Available On All SKUs • www.radians.com • 877-723-4267

crucible

Adjustable Rubber Nosepiece for added comfort
Dual Mold, Rubber Temples for all day comfort



40227 | Frame: White
| Lens: Silver Mirror Polarized

mp7



Full-Frame Design for maximum protection
Dual Mold, Rubber Temple Grips for better stability



24426 | Frame: Crystal Black
| Lens: Blue Green Polarized

alpine



Rubber Nose and Brow Guard for additional comfort
Dual Mold, Flexible Temples for all day comfort



25226 | Frame: Matte Black
| Lens: Brown Polarized



All glasses meet ANSI Z87.1+ standards, protect against 99.9% of harmful UV rays and include a hard coat polycarbonate lens to protect against scratches.

POLARIZED

infinity

Vented Rubber Nosepiece for breathability
Dual Mold Rubber Temple Grips for better stability



21126 | Frame: Crystal Brown
| Lens: HD Brown Polarized

rpg

Sleek, Modern Full-Frame Design for added protection
Dual Mold, Rubber Temple Grips for better stability



23226 | Frame: Matte Black
| Lens: HD Blue Mirror Polarized

sniper

Vented Rubber Nosepiece for added comfort
Lightweight, Flexible Temples for a comfortable fit



9614 | Frame: Shiny Black
| Lens: Smoke Polarized

core

Rubber Nosepiece for all day comfort
Rubber Insert, Sport Temple Grips for a snug fit



181813 | Frame: Mocha
| Lens: HD Brown Polarized





CROSSFIRE[®]
by RADIANS

PREMIUM EYEWEAR

arcus

Stylish Temple logo/graphic
Rubber Nosepiece for added comfort



452408 | Frame: White/Graphic
| Lens: Blue Mirror



452203 | Frame: Silver/Graphic
| Lens: Silver Mirror



450501 | Frame: Black/Graphic
| Lens: Smoke



451107 | Frame: Espresso/Graphic
| Lens: HD Brown



All glasses meet ANSI Z87.1+ standards, protect against 99.9% of harmful UV rays and include a hard coat polycarbonate lens to protect against scratches.

ES6



441107 | Frame: Crystal Brown
| Lens: HD Brown

Inlaid Temple Grips for better stability & comfort
Soft, Rubber Nosepiece for added comfort



442208 | Frame: Crystal Red
| Lens: Clear



442208 | Frame: Silver Gloss
| Lens: Blue Mirror



440615 | Frame: Matte Black
| Lens: Indoor/Outdoor



440613 | Frame: Matte Black
| Lens: Brown Polarized



440401 | Frame: Crystal Black
| Lens: Smoke



40227 | Frame: White
| Lens: Silver Mirror Polarized

crucible

Adjustable Rubber Nosepiece for added comfort
Dual Mold, Rubber Temples for all day comfort



40228 | Frame: Matte Black
| Lens: Blue Mirror



40117 | Frame: Crystal Brown
| Lens: HD Brown



4061 | Frame: Shiny Black
| Lens: Smoke



40412 | Frame: Crystal Black
| Lens: Indoor/Outdoor





2812 | Frame: Black/Burnt Orange
| Lens: Gold Mirror

infinity

Vented Rubber Nosepiece for breathability
Dual Mold, Rubber Temple Grips for better stability



21126 | Frame: Crystal Brown
| Lens: HD Brown Polarized



2117 | Frame: Crystal Brown
| Lens: HD Brown Mirror



241 | Frame: Crystal Black
| Lens: Smoke



2244 | Frame: Pearl White
| Lens: Clear



2243 | Frame: Pearl White
| Lens: Silver Mirror



224 | Frame: Shiny Pearl Gray
| Lens: Clear



263 | Frame: Shiny Black
| Lens: Smoke



22528 | Frame: Pearl Pink
| Lens: Dark Smoke



2254 | Frame: Pearl Pink
| Lens: Clear



9614 | Frame: Shiny Black
| Lens: Smoke Polarized

sniper

Lightweight, Flexible Temples for a comfortable fit
Vented Rubber Nosepiece for added comfort



9141 | Frame: Woodland Brown Camo
| Lens: Smoke



91721 | Frame: Military Green Camo
| Lens: HD Green



9233 | Frame: Crystal Burgundy
| Lens: Silver Mirror



921 | Frame: Matte Black
| Lens: Smoke



9117 | Frame: Crystal Brown
| Lens: HD Brown Mirror



91116 | Frame: Crystal Brown
| Lens: HD Medium Copper



9215 | Frame: Shiny Pearl Gray
| Lens: Indoor/Outdoor



9221 | Frame: Matte Black
| Lens: HD Green



925 | Frame: Matte Black
| Lens: Yellow



9610 | Frame: Shiny Black
| Lens: Emerald Mirror



924 | Frame: Matte Black
| Lens: Clear



All glasses meet ANSI Z87.1+ standards, protect against 99.9% of harmful UV rays and include a hard coat polycarbonate lens to protect against scratches.



rp9

Sleek, Modern Full-Frame Design for added protection
Dual Mold, Rubber Temple Grips for better stability



23117 | Frame: Crystal Brown
| Lens: HD Brown Mirror



23226 | Frame: Matte Black
| Lens: HD Blue Mirror Polarized



23421 | Frame: Crystal Black
| Lens: Smoke



23125 | Frame: Burnt Orange
| Lens: HD Demi Copper Mirror



23233 | Frame: Shiny Black/Pearl Red
| Lens: Silver Mirror



23615 | Frame: Shiny Pearl Gray
| Lens: Indoor/Outdoor



ar3

Adjustable Rubber Nosepiece for added comfort
Dual Mold Rubber Temple Grips for better stability

1663 | Frame: Shiny Black
| Lens: Silver Mirror



16278 | Frame: White
| Lens: Blue Mirror



16146 | Frame: Woodland Brown Camo
| Lens: HD Brown



16428 | Frame: Crystal Black
| Lens: Super Dark Smoke



16144 | Frame: Woodland Brown Camo
| Lens: Clear



1664 | Frame: Shiny Pearl Gray
| Lens: Clear



161129 | Frame: Crystal Brown
| Lens: Super Dark Brown



es4

Adjustable Rubber Nosepiece for added comfort
Dual Mold, Rubber Temple Grips for better stability



21427 | Frame: Crystal Black
| Lens: Silver Mirror Polarized



2169 | Frame: Matte Black
| Lens: HD Red Mirror



211125 | Frame: Crystal Brown
| Lens: HD Brown Mirror



2123 | Frame: Shiny Black
| Lens: Silver Mirror



2141 | Frame: Crystal Black
| Lens: Smoke



2164 | Frame: Shiny Pearl Gray
| Lens: Clear



m6a

Sleek, Full-Frame Design for maximum protection
Rubber Nose Pad for all day comfort



20288 | Frame: Metallic Blue
| Lens: Blue Mirror



20278 | Frame: White
| Lens: Blue Mirror



20291 | Frame: Crystal Black
| Lens: Smoke



201130 | Frame: Crystal Brown
| Lens: HD Brown Mirror



2063 | Frame: Pearl Black
| Lens: Silver Mirror



201615 | Frame: Pearl Gray
| Lens: Indoor/Outdoor



All glasses meet ANSI Z87.1+ standards, protect against 99.9% of harmful UV rays and include a hard coat polycarbonate lens to protect against scratches.

kp6

Rubber Nosepiece for all day comfort
Dual Mold Rubber Temple Grips for better stability



3469 | Frame: Shiny Black
| Lens: Red Mirror



341116 | Frame: Crystal Brown
| Lens: HD Dark Copper



3463 | Frame: Shiny Black
| Lens: Silver Mirror



3441 | Frame: Crystal Black
| Lens: Smoke



34257 | Frame: Crystal Brown
| Lens: HD Brown Mirror



3464 | Frame: Shiny Pearl Gray
| Lens: Clear

core



Rubber Nosepiece for all day comfort
Rubber Insert, Sport Temple Grips for a snug fit



181813 | Frame: Mocha
| Lens: HD Brown Polarized



1863 | Frame: Shiny Black
| Lens: Silver Mirror



18117 | Frame: Crystal Brown
| Lens: HD Brown Mirror



181212 | Frame: Emerald Pearl
| Lens: Gold Mirror



18146 | Frame: Woodland Brown Camo
| Lens: HD Brown



18171 | Frame: Military Green Camo
| Lens: Smoke



1864 AF | Frame: Shiny Pearl Gray
| Lens: Clear Anti Fog



1821 | Frame: Matte Black
| Lens: Smoke



18615 | Frame: Shiny Pearl Gray
| Lens: Indoor/Outdoor

TL11

Adjustable Rubber Nosepiece for added comfort
Dual Mold, Rubber Temple Grips for better stability



36633 | Frame: Shiny Pearl Gray
| Lens: Silver Mirror



3621 | Frame: Crystal Brown
| Lens: Gold Mirror



361132 | Frame: Matte Black
| Lens: Indoor/Outdoor



36612 | Frame: Shiny Pearl Gray
| Lens: Indoor/Outdoor



3664 | Frame: Shiny Pearl Gray
| Lens: Clear

CIRRUS

Adjustable Rubber Nosepiece for added comfort
Sleek, One-Piece Lens Design for a full field of vision



39812 | Frame: Burnt Orange
| Lens: Gold Mirror



3968 | Frame: Shiny Black
| Lens: Red Mirror



392215 | Frame: Matte Black
| Lens: Indoor/Outdoor



39223 | Frame: Matte Black
| Lens: Silver Mirror



39221 | Frame: Matte Black
| Lens: Smoke



CUMULUS

Rubber Nosepiece for all day comfort
Dual Mold, Rubber Temple Grips for better stability



41626 | Frame: Matte Black
Lens: Blue Mirror



41285 | Frame: Tan SDE
Lens: HD Yellow



411432 | Frame: Camo
Lens: Gold Mirror



41291 | Frame: Aluminum Gray
Lens: Smoke



412215 | Frame: Silver
Lens: Indoor/Outdoor Mirror



ESS

Rubber Nosepiece for all day comfort
Dual Mold, Rubber Temple Grips for better stability



291113 | Frame: Crystal Brown
Lens: HD Brown Polarized



2968 | Frame: Shiny Black
Lens: Blue Mirror



29117 | Frame: Crystal Brown
Lens: HD Brown Mirror



2964 | Frame: Shiny Pearl Gray
Lens: Clear



29215 | Frame: Matte Black
Lens: Indoor/Outdoor



2961 | Frame: Shiny Pearl Gray
Lens: Smoke

ESSW

Rubber Nosepiece for all day comfort
Adjustable Wired Temples for custom fit



ESSW shown with bent temples



12620W | Frame: Shiny Black
Lens: Fire Mirror



1241W | Frame: Crystal Black
Lens: Smoke



1224W | Frame: Matte Black
Lens: Clear



All glasses meet ANSI Z87.1+ standards, protect against 99.9% of harmful UV rays and include a hard coat polycarbonate lens to protect against scratches.

PREMIUM



KCBR

Vented Rubber Nosepiece for breathability
Dual Mold, Rubber Temple Grips for better stability



1583 | Frame: Crystal Orange
| Lens: Silver Mirror



1541 | Frame: Crystal Black
| Lens: Smoke



15415 | Frame: Crystal Black
| Lens: Indoor/Outdoor



15117 | Frame: Crystal Brown
| Lens: HD Brown Mirror



1528 | Frame: Matte Black
| Lens: Red Mirror



1524 | Frame: Shiny Black
| Lens: Clear



alpine

Rubber Nose and Brow Gaurd for additional comfort
Dual Mold, Flexible Temples for all day comfort



25226 | Frame: Matte Black
| Lens: Brown Polarized



25228 | Frame: Crystal Brown
| Lens: Blue Mirror



25221 | Frame: Matte Black
| Lens: Smoke



252215 | Frame: Shiny Pearl Gray
| Lens: Indoor/Outdoor



Custom Imprinting Available On All SKUs • www.radians.com • 877-723-4267



CROSSFIRE
by RADIANS

PERFORMANCE EYEWEAR

talon



Vented Rubber Nosepiece for breathability
Rubber Insert Temple Grips for a snug fit



119 | Frame: Copper
| Lens: Red Mirror



126 | Frame: Matte Black
| Lens: HD Brown



121 | Frame: Matte Black
| Lens: Smoke



124 | Frame: Matte Black
| Lens: Clear

brigade



Vented Rubber Nosepiece for breathability
Lightweight, Half Frame for all day use



17312 | Frame: Matte Black
| Lens: Gold Mirror



1733 | Frame: Shiny Black/Red
| Lens: Silver Mirror



1731 | Frame: Matte Black
| Lens: Smoke



1734 | Frame: Matte Black
| Lens: Clear



All glasses meet ANSI Z87.1+ standards, protect against 99.9% of harmful UV rays and include a hard coat polycarbonate lens to protect against scratches.

PERFORMANCE



3748 | Frame: Crystal Black
| Lens: Blue Mirror

24seven

Ultra Lightweight, Single Lens Design
Flexible Temples for all day comfort



37117 | Frame: Crystal Brown
| Lens: HD Brown



3754 | Frame: Crystal Clear
| Lens: Clear



37415 | Frame: Crystal I/O
| Lens: Indoor/Outdoor



30210 | Frame: Black
| Lens: Emerald Mirror

blade

Vented Rubber Nosepiece for breathability
One-Piece, Frameless Lens for greater coverage



3023 | Frame: Black
| Lens: Silver Mirror



30219 AF | Frame: Black
| Lens: Orange Anti-Fog



3025 AF | Frame: Black
| Lens: Yellow Anti-Fog



30137 | Frame: Brown
| Lens: Brown Indoor/Outdoor



3024 AF | Frame: Black
| Lens: Clear Anti-Fog



3021 AF | Frame: Black
| Lens: Smoke Anti-Fog



32231 AF | Frame: Aqua
| Lens: Smoke Anti-Fog



32224 AF | Frame: Pink
| Lens: Clear Anti-Fog



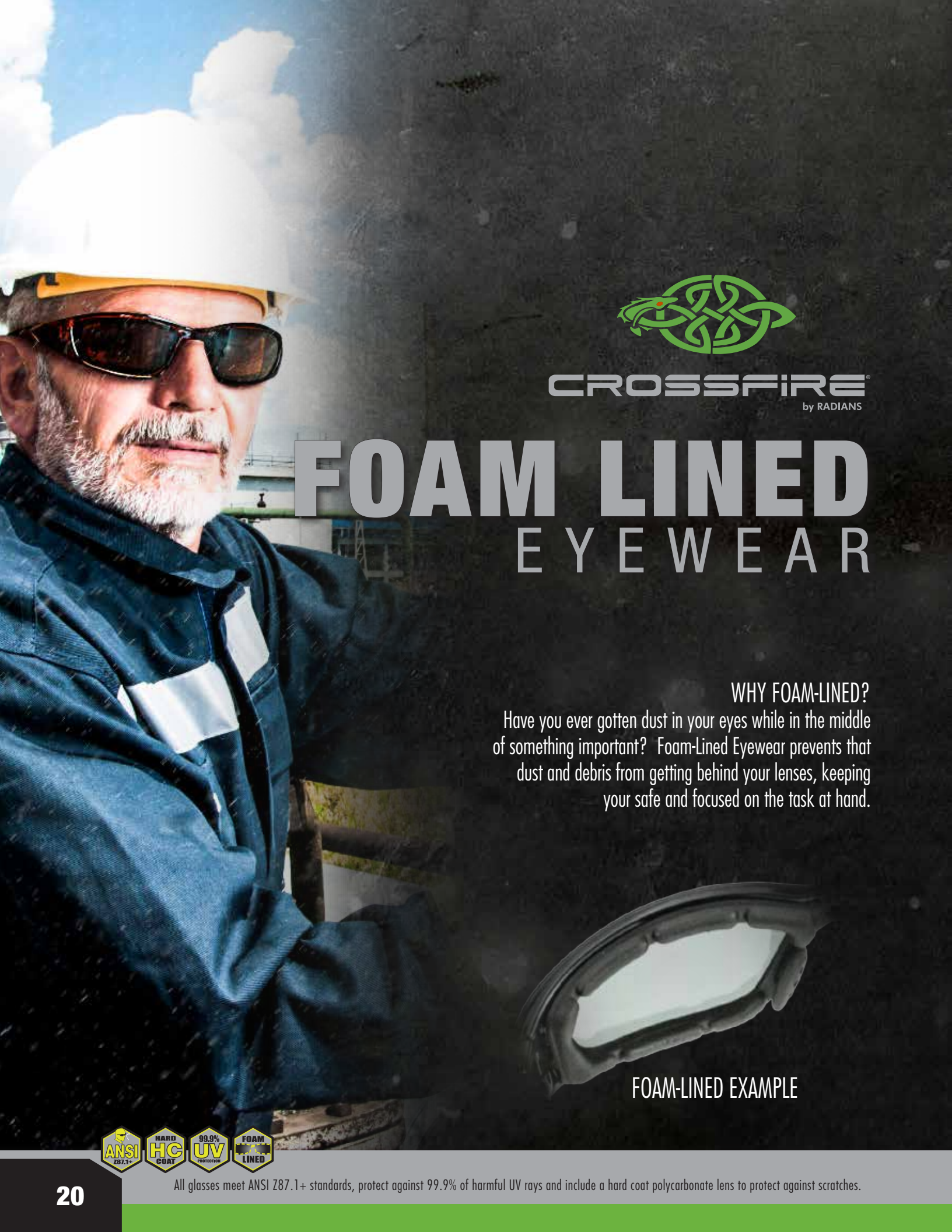
321315 | Frame: Brown
| Lens: Brown Indoor/Outdoor

mini blade

Eyewear for Smaller Individuals



Custom Imprinting Available On All SKUs • www.radians.com • 877-723-4267



CROSSFIRE
by RADIANS

FOAM LINED EYEWEAR

WHY FOAM-LINED?

Have you ever gotten dust in your eyes while in the middle of something important? Foam-Lined Eyewear prevents that dust and debris from getting behind your lenses, keeping you safe and focused on the task at hand.



FOAM-LINED EXAMPLE



All glasses meet ANSI Z87.1+ standards, protect against 99.9% of harmful UV rays and include a hard coat polycarbonate lens to protect against scratches.

FOAM-LINED



24223 | Frame: Shiny Chrome
| Lens: Silver Mirror

mp7

Full Frame Design for maximum protection
Dual Mold, Rubber Temple Grips for better stability



Foam Lining



2461 AF | Frame: Shiny Black
| Lens: Smoke Anti-Fog



24116 AF | Frame: Crystal Brown
| Lens: HD Brown Anti-Fog



2444 AF | Frame: Crystal Black
| Lens: Clear Anti-Fog



24222 AF | Frame: Matte Black
| Lens: Yellow Anti-Fog



24263 | Frame: Soft Pink
| Lens: Silver Mirror



24264 AF | Frame: Soft Pink
| Lens: Clear Anti-Fog



24615 AF | Frame: Shiny Pearl Gray
| Lens: Indoor/Outdoor Anti-Fog



38117 | Frame: Crystal Brown
| Lens: HD Brown Anti-Fog

24seven foam-lined

Ultra Lightweight, Single Lens Design for additional coverage
Flexible Temples for all day comfort



Foam Lining



3841 | Frame: Crystal Black
| Lens: Smoke Anti-Fog



3854 | Frame: Crystal Clear
| Lens: Clear Anti-Fog



Custom Imprinting Available On All SKUs • www.radians.com • 877-723-4267

FOAM-LINED

710



Integral Strap Attachment without removing temples
EVA Foam-Lined Frame protects against dust and debris



3541 | Frame: Crystal Black
| Lens: Smoke Anti-Fog



35117 | Frame: Crystal Brown
| Lens: Brown Anti-Fog



35231 | Frame: Matte Black
| Lens: Indoor/Outdoor Revo Anti-Fog



ES35 | Strap Attachment
Sold Separately



3564 | Frame: Pearl Gray
| Lens: Clear Anti-Fog



| 35117 with ES35
| Strap



1169 | Frame: Shiny Black
| Lens: HD Red Mirror Anti-Fog

mk12

EVA Foam-Lined Frame protects against dust and debris
Adjustable Temples to fit a wider range of faces



1161 AF | Frame: Shiny Pearl Gray
| Lens: Smoke Anti-Fog



1164 AF | Frame: Shiny Pearl Gray
| Lens: Clear Anti-Fog



11615 AF | Frame: Shiny Pearl Gray
| Lens: Indoor/Outdoor Anti-Fog



All glasses meet ANSI Z87.1+ standards, protect against 99.9% of harmful UV rays and include a hard coat polycarbonate lens to protect against scratches.

FOAM-LINED



concept



EVA Foam-Lined Frame protects against dust and debris
 Vented Rubber Nosepiece for added comfort



873 | Frame: Orange/Black
 | Lens: Silver Mirror



867 AF | Frame: Crystal Brown
 | Lens: Dark Smoke Anti-Fog



828 | Frame: Matte Black
 | Lens: Blue Mirror



844 AF | Frame: Crystal Black
 | Lens: Clear Anti-Fog



8415 AF | Frame: Crystal Black
 | Lens: I/O Anti-Fog



821 AF | Frame: Matte Black
 | Lens: Smoke Anti-Fog

solar eclipse



EVA Foam-Lined Frame protects against dust and debris
 Adjustable Temples to fit a wider range of faces



26116 AF | Frame: Crystal Brown
 | Lens: HD Brown



26222 AF | Frame: Matte Black
 | Lens: Yellow/Flash Mirror Anti-Fog



26164 AF | Frame: Gun Metal
 | Lens: Clear Anti-Fog



ES26 | Strap Attachment
 | Sold Separately



11615 AF | Frame: Matte Black
 | Lens: Smoke Anti-Fog



2641 AF with ES26 Strap



Custom Imprinting Available On All SKUs • www.radians.com • 877-723-4267

FOAM-LINED element



91351 AF | Frame: Black
| Lens: Clear Anti-Fog

Adjustable Headstrap for a comfortable fit
Open Cell, Foam-Lining protects against dust and debris



Foam Lining



91352 AF | Frame: Black
| Lens: Smoke Anti-Fog



91353 AF | Frame: Black
| Lens: Yellow Anti-Fog



28216 AF | Frame: Shiny Black
| Lens: HD Copper Anti-Fog

EVA Foam-Lined Frame protects against dust and debris
Detachable Temples can be replaced with elastic strap



Foam Lining



2861 AF | Frame: Shiny Black
| Lens: Dark Smoke Anti-Fog



28415 AF | Frame: Crystal Black
| Lens: Indoor/Outdoor Anti-Fog



ES28 | Strap Attachment
| Sold Separately



2834 AF | Frame: Crystal Black
| Lens: Clear Anti-Fog



2861 AF with ES28 Strap



All glasses meet ANSI Z87.1+ standards, protect against 99.9% of harmful UV rays and include a hard coat polycarbonate lens to protect against scratches.

FOAM-LINED



27103 | Frame: Shiny Red
| Lens: Silver Mirror

diamond back

EVA Foam-Lined Frame protects against dust and debris
Soft Rubber Nosepiece for added comfort



Foam Lining



2724 AF | Frame: Matte Black
| Lens: Clear Anti-Fog



27615 AF | Frame: Shiny Black
| Lens: Indoor/Outdoor Anti-Fog



2761 AF | Frame: Shiny Black
| Lens: Smoke Anti-Fog



548 | Frame: Crystal Black
| Lens: Blue Mirror

shield

EVA Foam-Lined Frame protects against dust and debris
Frameless, Lightweight Design for all day comfort



Foam Lining



5515 AF | Frame: Crystal Clear
| Lens: Indoor/Outdoor Anti-Fog



546 AF | Frame: Crystal Brown
| Lens: HD Brown Anti-Fog



36612 | Frame: Crystal Black
| Lens: Smoke Anti-Fog



554 AF | Frame: Crystal Clear
| Lens: Clear Anti-fog



Custom Imprinting Available On All SKUs • www.radians.com • 877-723-4267



CROSSFIRE[®]
by RADIANS

BIFOCAL EYEWEAR

WHY CROSSFIRE BIFOCALS?

We know you get tired of switching out your safety eyewear for reading glasses while your on the job. So we took some of our best styles from our Crossfire[®] line and added Magnification Diopters to the lenses giving you a Bifocal Safety Eyewear that you'll actually want to wear.

CROSSFIRE[®] BIFOCAL STRENGTH CHART

Weak	Mild	Strong
1.5+	2.0+	2.5+



ES4 bifocal

Sleek, Lightweight Stylish Design for work and play
Soft Rubber Nosepiece for all day comfort



216112 | Frame: Matte Black
| Lens: Bronze



216415 | Frame: Shiny Black
| Lens: Clear



Model #	Frame Color	Lens
216112	● Matte Black	Bronze 1.25 Diopter
216115	● Matte Black	Bronze 1.5 Diopter
216120	● Matte Black	Bronze 2.0 Diopter
216125	● Matte Black	Bronze 2.5 Diopter
216412	● Shiny Black	Clear 1.25 Diopter
216415	● Shiny Black	Clear 1.5 Diopter
216420	● Shiny Black	Clear 2.0 Diopter
216425	● Shiny Black	Clear 2.5 Diopter



All glasses meet ANSI Z87.1+ standards, protect against 99.9% of harmful UV rays and include a hard coat polycarbonate lens to protect against scratches.

BIFOCALS

es5 bifocal



2941415 | Frame: Crystal Black
| Lens: Polarized Smoke



2911712 | Frame: Crystal Brown
| Lens: HD Brown



296415 | Frame: Shiny Black
| Lens: Clear

Rubber Nosepiece for all day comfort
Dual Mold, Rubber Temple Grips for better stability



Model #	Frame Color	Lens
2941415	Crystal Black	Polarized Smoke 1.5 Diopter
2941420	Crystal Black	Polarized Smoke 2.0 Diopter
2941425	Crystal Black	Polarized Smoke 2.5 Diopter
2911712	Crystal Brown	HD Brown 1.25 Diopter
2911715	Crystal Brown	HD Brown 1.5 Diopter
2911720	Crystal Brown	HD Brown 2.0 Diopter
2911725	Crystal Brown	HD Brown 2.5 Diopter
296412	Shiny Black	Clear 1.25 Diopter
296415	Shiny Black	Clear 1.5 Diopter
296420	Shiny Black	Clear 2.0 Diopter
296425	Shiny Black	Clear 2.5 Diopter



164115 | Frame: Crystal Black
| Lens: Super Dark Smoke



166415 | Frame: Shiny Pearl Gray
| Lens: Clear

ar3 bifocal

Adjustable Rubber Nosepiece for added comfort
Dual Mold, Rubber Temple Grips for better stability



Model #	Frame Color	Lens
164115	Crystal Black	Super Dark Smoke 1.5 Diopter
164120	Crystal Black	Super Dark Smoke 2.0 Diopter
164125	Crystal Black	Super Dark Smoke 2.5 Diopter
166415	Shiny Pearl Gray	Clear 1.5 Diopter
166420	Shiny Pearl Gray	Clear 2.0 Diopter
166425	Shiny Pearl Gray	Clear 2.5 Diopter



sniper bifocal



Vented Rubber Nosepiece for breathability

Lightweight, Comfort-Fit Half Frame for all day comfort



92115 | Frame: Shiny Black
| Lens: Smoke

Model #	Frame Color	Lens
92115	● Shiny Black	Smoke 1.5 Diopter
92120	● Shiny Black	Smoke 2.0 Diopter
92125	● Shiny Black	Smoke 2.5 Diopter
92415	● Shiny Black	Clear 1.5 Diopter
92420	● Shiny Black	Clear 2.0 Diopter
92425	● Shiny Black	Clear 2.5 Diopter

talon bifocal



Vented Rubber Nosepiece for comfort and breathability

Rubber Insert Temple Grips for a snug fit



12115 | Frame: Shiny Black
| Lens: Smoke

Model #	Frame Color	Lens
12115	● Shiny Black	Smoke 1.5 Diopter
12120	● Shiny Black	Smoke 2.0 Diopter
12125	● Shiny Black	Smoke 2.5 Diopter
12415	● Shiny Black	Clear 1.5 Diopter
12420	● Shiny Black	Clear 2.0 Diopter
12425	● Shiny Black	Clear 2.5 Diopter

mk12 bifocal



EVA Foam-Lined Frame protects against dust and debris

Adjustable Temples to fit a wider range of faces



116115 | Frame: Shiny Pearl Gray
| Lens: Smoke

Model #	Frame Color	Lens
116115	● Shiny Pearl Gray	Smoke 1.5 Diopter
116120	● Shiny Pearl Gray	Smoke 2.0 Diopter
116125	● Shiny Pearl Gray	Smoke 2.5 Diopter
116415	● Shiny Pearl Gray	Clear 1.5 Diopter
116420	● Shiny Pearl Gray	Clear 2.0 Diopter
116425	● Shiny Pearl Gray	Clear 2.5 Diopter

concept bifocal



Vented Rubber Nosepiece for all day comfort

EVA Foam-Lined Frame protects against dust and debris



82115 | Frame: Shiny Black
| Lens: Smoke

Model #	Frame Color	Lens
82115	● Shiny Black	Smoke 1.5 Diopter
82120	● Shiny Black	Smoke 2.0 Diopter
82125	● Shiny Black	Smoke 2.5 Diopter
84415	● Crystal Black	Clear 1.5 Diopter
84420	● Crystal Black	Clear 2.0 Diopter
84425	● Crystal Black	Clear 2.5 Diopter



All glasses meet ANSI Z87.1+ standards, protect against 99.9% of harmful UV rays and include a hard coat polycarbonate lens to protect against scratches.



CROSSFIRE
by RADIANS

OTG STYLE EYEWEAR

WHY OTG STYLE?

Crossfire offers full coverage over-the-glass eyewear so your workers can remain safe while wearing their personal prescription eyewear. Available with temple length adjustment features and one piece lens designs that fit over most prescription glasses, our OTG eyewear provides you with an affordable and comfortable safety solution to help you meet ANSI Z87.1+ standards.

093

Fits over glasses for protection



3112



3116

Small to Medium Sizes (131mm)

Model #	Frame Color	Lens
3112	S/M Crystal Brown	Brown
3111	S/M Shiny Pearl Gray	Clear
3113	S/M Crystal Black	Smoke

Large to XLarge Sizes (141mm)

Model #	Frame Color	Lens
3116	L/XL Crystal Black	Smoke
3115	L/XL Crystal Brown	Brown
3114	L/XL Shiny Pearl Gray	Clear

Wire Mesh

Black Wire Mesh front eye protection designed for extremely humid environments.

*Does not meet ANSI Z87.1+ Standard.



19218



19220

Model #	Frame Color	Lens
19218	Matte Black	Wire Mesh
19220	Matte Black with Elastic Strap	Wire Mesh



Custom Imprinting Available On All SKUs • www.radians.com • 877-723-4267





CROSSFIRE
by RADIANS

PINK FRAMES

WHY PINK FRAMES?

Our Pink Frames line of safety eyewear provides a comfortable fit for smaller faces and is available in a variety of styles, shapes, and lens colors. But don't let the pink frames fool you. They offer the same high impact protection and comfort features as our other safety eyewear.



22528 | Frame: Pearl Pink
| Lens: Dark Smoke



2254 | Frame: Pearl Pink
| Lens: Clear

infinity

Vented Rubber Nosepiece for breathability
Dual Mold, Rubber Temple Grips for better stability



All glasses meet ANSI Z87.1+ standards, protect against 99.9% of harmful UV rays and include a hard coat polycarbonate lens to protect against scratches.

PINK FRAMES

mp7

Full Frame Design for maximum protection
Dual Mold, Rubber Temple Grips for better stability



24263 | Frame: Soft Pink
| Lens: Silver Mirror



24264 AF | Frame: Soft Pink
| Lens: Clear Anti-Fog

mini blade

Eyewear for Smaller Individuals
Vented Rubber Nosepiece for breathability
One-Piece, Frameless Lens for greater coverage



32224 AF | Frame: Pink
| Lens: Clear Anti-Fog

accessories

Model #	Description
C12	12 Piece Sample Cases
C24	24 Piece Sample Cases
CR1	Black Micro Fiber Bag
CR3	Black Zipper Pouch
G4	3/16 Adjustable Neck Cord
G3	Adjustable Neck Cord



C12 & C24



CR1



CR3



G3



G4

displays

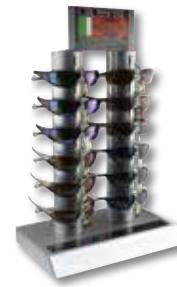
Model #	Description
60BABA	60 Unit Flat Panel Floor Display (1 sided)
36BABA	36 Unit Revolving Counter Display (2 sided)
PL12	12 Unit Counter Locking Display for Polarized Glasses (1 sided)
CD18	18 Unit Peg Board/Counter Display/End Caps (1 Sided)



60BABA



36BABA



PL12



CD18



Custom Imprinting Available On All SKUs • www.radians.com • 877-723-4267



CROSSFIRE[®]

by RADIANS



HEADQUARTERS
5305 Distriplex Farms Drive
Memphis, Tennessee 38141
Toll Free: 877-723-4267
Phone: 901-388-7776
Fax: 901-266-2558