

2022 Catalog

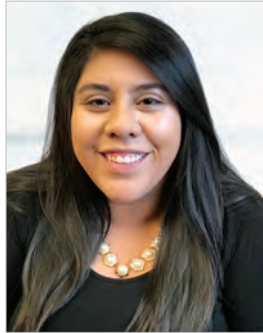




PRESTIGE MEDICAL®



Brian Spangenberg
President



Roxanna Hernandez
Sales Executive



Karina Enriquez
International Sales



Daniela Rodriguez
Purchasing Manager



Ryan Drew
Marketing Director



Carol Bilderbach
Customer Support

Over 50 years ago, Prestige Medical pioneered the concept of pairing diagnostic medical instruments and nursing accessories with medical apparel in retail uniform stores across the United States.

Today, Prestige Medical has built a reputation of excellence with doctors, nurses, students, and other healthcare professionals in the U.S. and globally as we have expanded our innovative personalization of healthcare instruments concept to six continents. A focus on stethoscopes, aneroid sphygmomanometers, pulse oximeters, digital blood pressure monitors, medical apparel, medical tools, and accessories makes Prestige Medical the industry leader in outfitting medical professionals.

contents

02

NEW PRODUCTS

06

Stethoscopes

16

Stethoscope
Accessories

20

3M Littmann®

24

Aneroid
Sphygmomanometers

30

Combination Kits

32

Prestige Basics

34

Home Healthcare

37

Diagnostic
Instruments

42

EMS Products

44

Scissors &
Instruments

50

Healthcare
Apparel

56

Eyewear

58

Organizers

60

Bags & Totes

63

Gifts & Pens

64

Lanyards &
ID Holders

68

Watches

71

Professional
Jewelry

74

Displays

75

General
Information

New Products

Model: 82, S82

Premium Aneroid Sphygmomanometer

2 new tie dye prints.

Page 26



New prints also available in Models: 882, A2 & 745



Model: 79, S79

Standard Aneroid Sphygmomanometer

1 new color.

Page 27



Model: 99

3D Stethoscope Jewelry

5 new styles.

Page 19



PKB
Pink Ribbon



CAT
Cat



COR
Corgi



PIG
Pig



CTS
Cactus

Model: 452

Pulse Oximeter

New model in 2 colors.

Page 34



WHT
White

BLK
Black

Model: 214, S214

Soft LED Pupil Gauge Penlight

1 new color.

Page 38



TEW
Teal / White

Model: 871

5½" StyleMate™ Printed Utility Scissors

3 new prints.

Page 45



CCS Cotton Candy Sky

TPR Tropical Reef

SNT Supernova

Model: 605

5½" Fluoride Scissors

2 new colors.

Page 44



TEA Teal

AQS Aqua Sea

Model: 387

Soft Comfort Compression Socks

2 new prints available.

Page 54



AUT Autism Awareness

LHP Leopard Print Hot Pink

Model: 386

Premium Knit Compression Socks

5 new prints available.

Page 55



AVO Avocados Grey

DMT Daisies Mint

YDS Yellow Ducks & Bubbles

PPN Puppy Party Navy

CHS Cherries Black

New Products

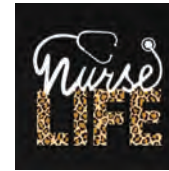
Model: 811
Womens T-Shirts
 8 new styles available.



FWB
 Frontline Warrior on Black



WHG
 Work of Heart on Grey



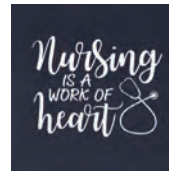
NLB
 Nurse Life on Black



NHP
 Nurse Heart on Pastel Pink



FWC
 Frontline Warrior on Ciel Blue



WHN
 Work of Heart on Navy



NLW
 Nurse Life on White



NHC
 Nurse Heart on Ciel Blue

Page 51

Models: 5400 & 5300
Colored Eyewear

1 new color.

Page 56



Model: 5420

Printed Eyewear

1 new print.

Page 57



Model: 1733

Two-Tone Scrub Watch

New redesigned model in 4 colors.

Page 68



PUW
 Purple / White



ROW
 Royal / White



TEW
 Teal / White



BKW
 Black / White

Model: 1731

Two-Tone Sport Watch

2 new colors with a redesigned watch face.

Page 68



TEW
Teal /
White



EBW
Electric
Blue /
White



BAS
Black /
Aqua
Sea

Model: 1769

Student Scrub Watch

1 new color.

Page 69



PEW
Pewter

Model: 1765

Ultra-Slim Scrub Watch

New model.

Page 69



WHT
White

Model: 1736

Easy Reader Watch

1 new color.

Page 70



WHT
White

Model: S13, 13-B Retraceze™ ID Holders

8 new heart styles, and 3 new pronoun styles.



CHA
CNA Heart
Aqua Sea



CHC
CNA Heart
Ciel Blue



RNA
RN Heart
Aqua Sea



RNP
RN Heart
Pink



NRB
Nurse Heart
Black



NRP
Nurse Heart
Purple

Page 66



CDN
Caduceus Heart
Navy



CDR
Caduceus Heart
Red



HIM
He/Him
White



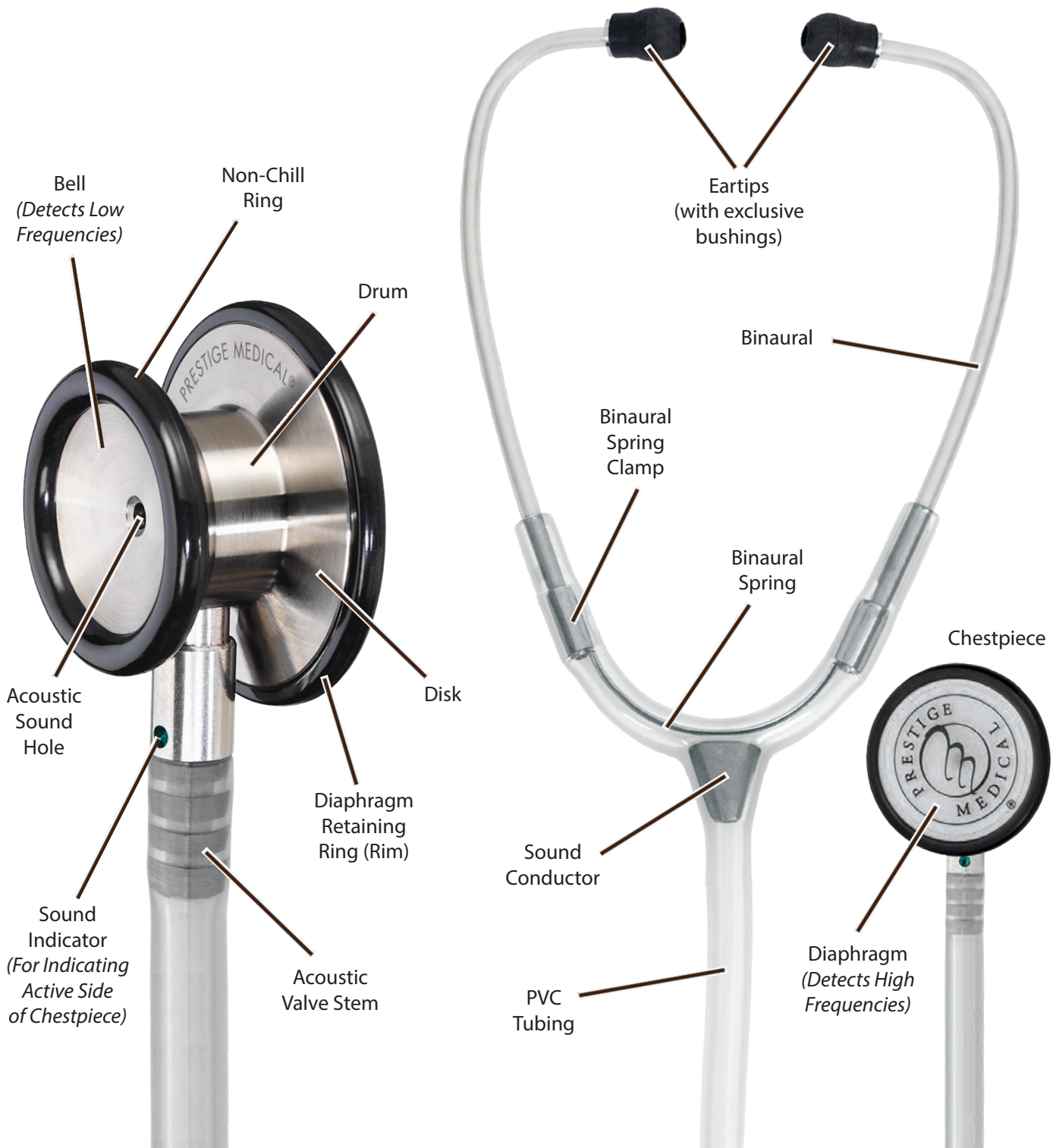
HER
She/Her
White



THM
They/Them
White

Stethoscopes

Prestige Medical® has been a leader and innovator of stethoscopes for over 50 years. From acoustic precision to lightweight designs, we have a stethoscope for every healthcare professional.





Featuring the highest quality materials and craftsmanship, Clinical Series stethoscopes offer the best performance for the healthcare professional.

All Clinical Series stethoscopes come with a Lifetime Warranty and include free replacement parts for life.



TRADITIONAL SERIES

Our Traditional Series features a wide range of stethoscopes that meet every need.

All Traditional Series stethoscopes* feature a Lifetime Warranty and include free replacement parts for life.



*Excludes Model 100 disposable stethoscope

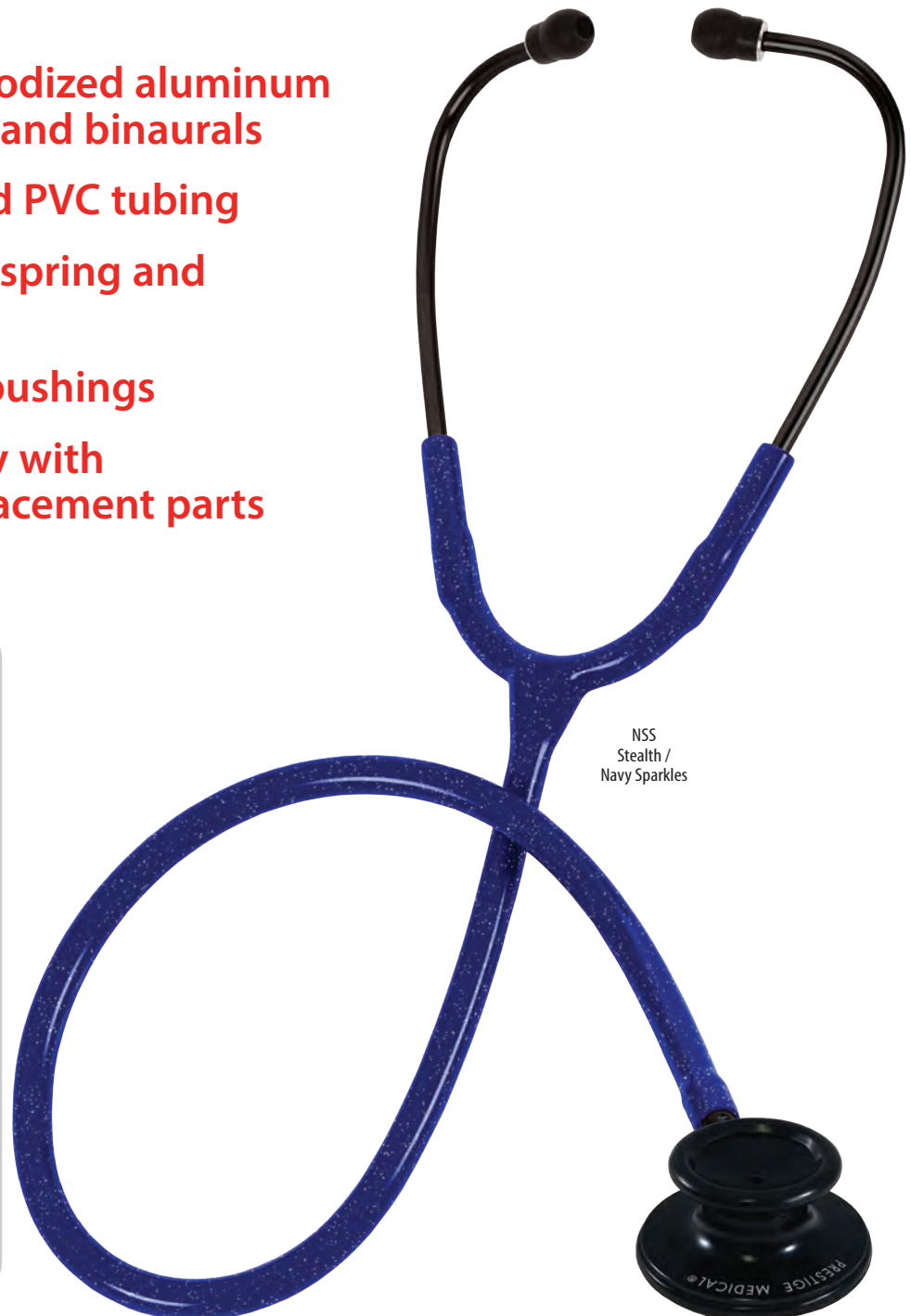
Ultra Lightweight Stethoscope

121 Two Piece Box

S121 Clamshell

Our best-selling lightweight stethoscope with outstanding acoustics!

- Satin-finished anodized aluminum chestpiece, stem and binaurals
- Extra thick-walled PVC tubing
- Internal binaural spring and sound conductor
- Exclusive eartip bushings
- Lifetime warranty with free lifetime replacement parts



Tube Colors

BLK Black	AQS Aqua Sea	HPK Hot Pink	NAV Navy
N-BLU Neon Blue	N-GRN Neon Green	N-PNK Neon Pink	PUR Purple
RAS Raspberry	ROY Royal	SAQ Aqua Sea Sparkles	HPS Hot Pink Sparkles
PPS Purple Sparkles	STE Stealth / Black	SAS Stealth / Aqua Sea	SHP Stealth / Hot Pink
NSS Stealth / Navy Sparkles	SNB Stealth / Neon Blue	SNG Stealth / Neon Green	SRS Stealth / Raspberry

Clinical Plus™



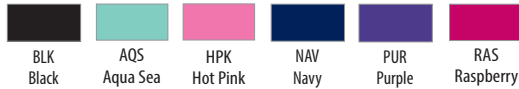
Advanced Dynamic Range Stethoscope

123 Two Piece Box **S123** Clamshell

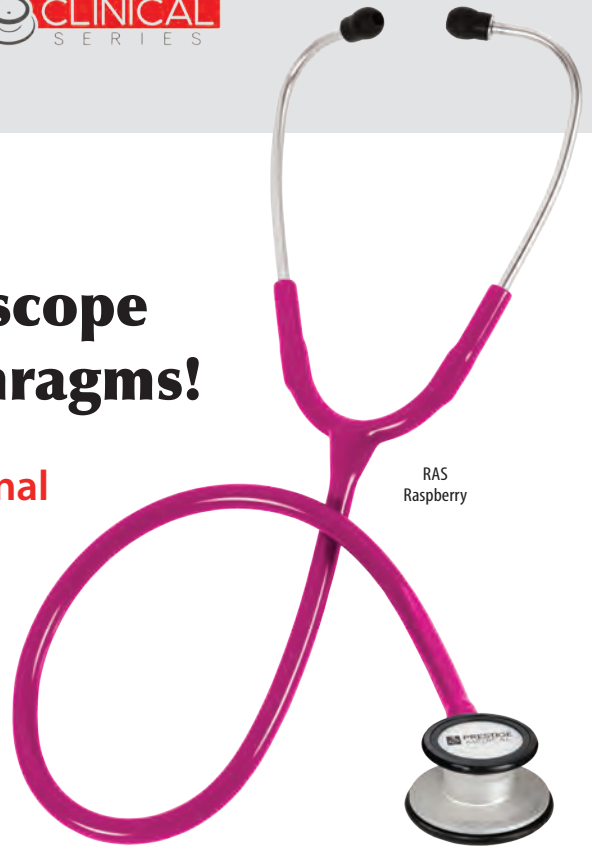
Advanced lightweight stethoscope with pressure sensitive diaphragms!

- Extra thick-walled PVC tubing with an internal binaural spring and sound conductor*

Tube Colors



Bell Configuration



RAS Raspberry

Clinical Cardiology®



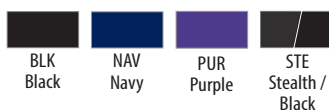
Elite All Stainless Steel Stethoscope

128 Two Piece Box

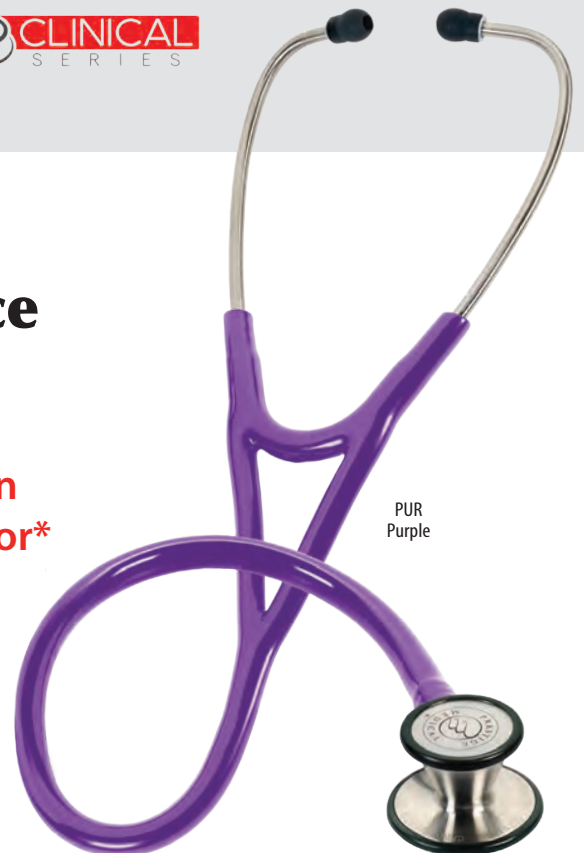
The best acoustic performance of the Clinical Series!

- Extra thick-walled dual lumen tubing with an internal binaural spring and sound conductor*

Tube Colors



Bell Configuration



PUR Purple

* All Clinical Series stethoscopes feature our lifetime warranty with free lifetime replacement parts

All Stainless Steel Stethoscope

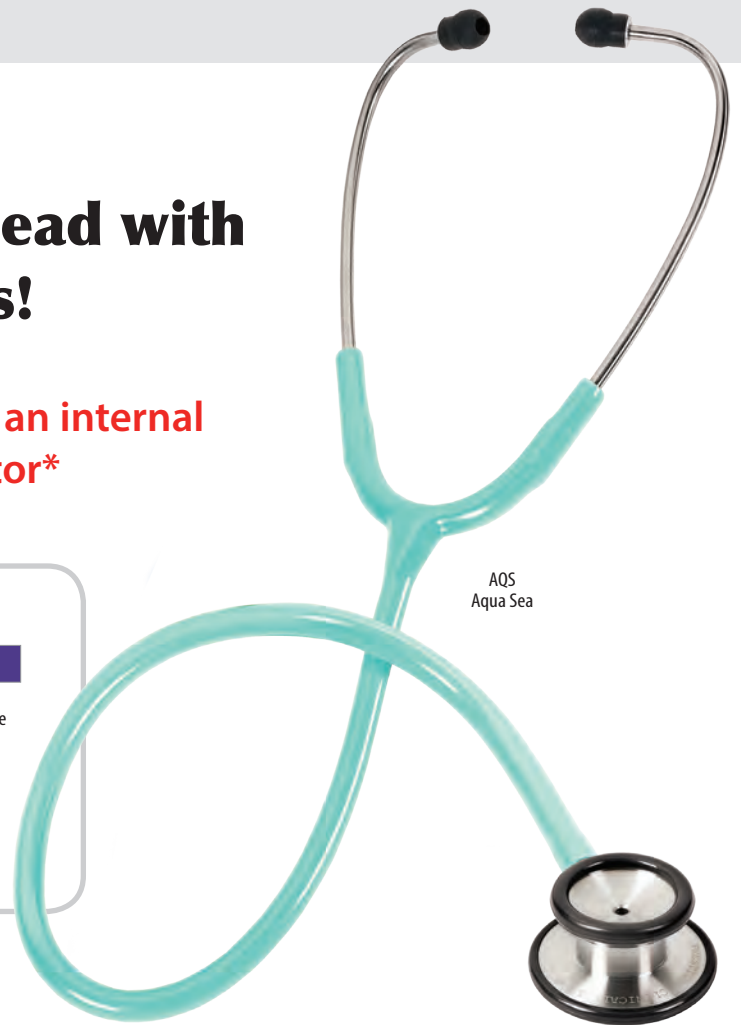
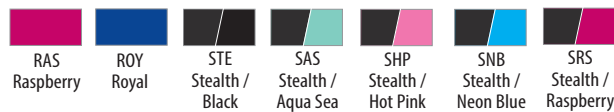
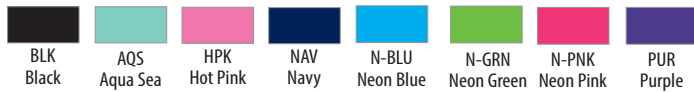
126 Two Piece Box

S126 Clamshell

All stainless steel dualhead with ultra-sensitive acoustics!

- Extra thick-walled PVC tubing with an internal binaural spring and sound conductor*

Tube Colors



Veterinary Edition

V126 Two Piece Box

- Features 2 inch longer tubing for easier auscultation of animals*

Tube Colors



Special Editions

126-G Gold Edition (Two Piece Box)

126-T Teaching Edition (Two Piece Box)

126-P Pediatric Edition (Two Piece Box)

126-I Infant Edition (Two Piece Box)

- Black tubing only*

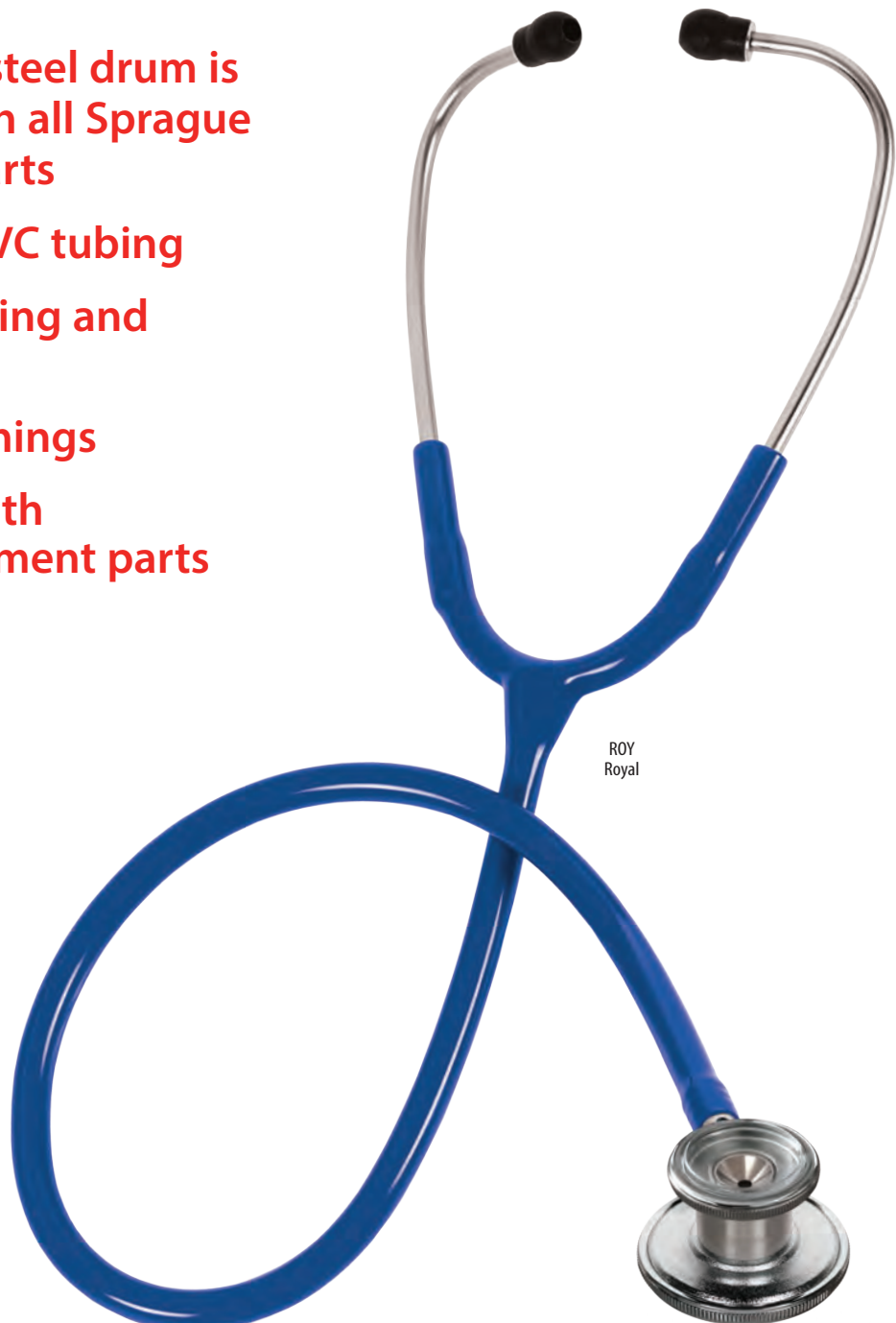


120 Two Piece Box

S120 Clamshell

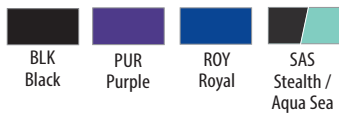
All the best features of the SpragueLite® with a Clinical's performance!

- Upgraded stainless steel drum is fully compatible with all Sprague and SpragueLite® parts
- Extra thick-walled PVC tubing
- Internal binaural spring and sound conductor
- Exclusive eartip bushings
- Lifetime warranty with free lifetime replacement parts



ROY
Royal

Tube Colors



Multiple Bell Configurations



Sprague-Rappaport

5-in-1 Interchangeable Stethoscope

122 Two Piece Box

S122 Clamshell

The most widely used stethoscope design featuring our exclusive eartip bushings!

- **Accessory pouch with six interchangeable parts plus ID tag and unique eartip bushings***

Tube Colors

					
BLK Black	AQS Aqua Sea	HPK Hot Pink	NAV Navy	N-BLU Neon Blue	N-GRN Neon Green
					
N-PNK Neon Pink	PUR Purple	RAS Raspberry	ROY Royal	TEA Teal	STE Stealth/ Black

Includes a
Diaphragm
Assembly
Configuration



Sprague-Rappaport Teaching Edition

S122-T Clamshell

- **Features two separate tube and binaural sets with a single chestpiece***
- **Enables instructors to teach students the finer points of auscultation**
- **Black tubing only**



SpragueLite®

5-in-1 Lightweight Stethoscope

S124 Clamshell

All the features of our Sprague but with significantly less weight!

- Exclusive US patented design #D390660*

Tube Colors



Assembly config.



PUR
Purple

Ultra Sensitive

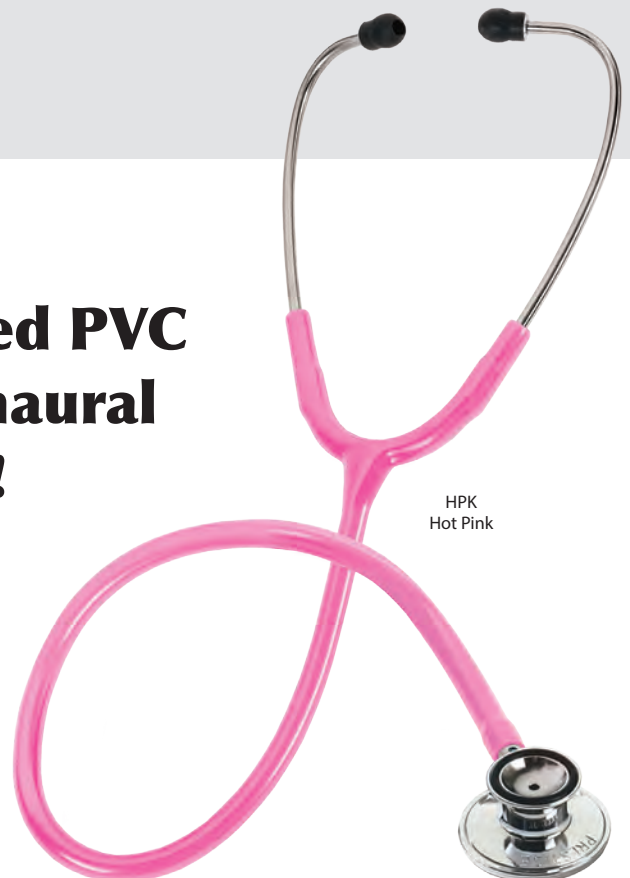
Premium Dual Head Stethoscope

S125 Clamshell

Upgraded extra thick-walled PVC tubing with an internal binaural spring & sound conductor!

- Ultra sensitive fiber diaphragm*

Tube Colors



HPK
Hot Pink

* All Traditional Series stethoscopes feature our lifetime warranty with free lifetime replacement parts

Dual Head

Stethoscope

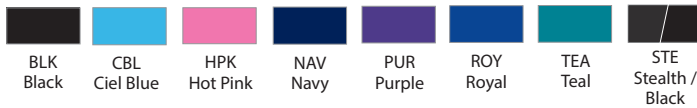
108 Two Piece Box

S108 Clamshell

Features a traditional aluminum dual head chestpiece.

- **PVC tubing for optimal sound***

Tube Colors



Pediatric & Infant

Dual Head Stethoscopes

S108-P Pediatric Edition (Clamshell)

S108-I Infant Edition (Clamshell)

- **Sized and designed for use with children and infants***

Tube Colors



Single Head

Stethoscope

106 Two Piece Box

S106 Clamshell

- **Ergonomic aluminum single head chestpiece***
- PVC tubing
- Black tubing only



Clear Sound®

Stethoscope

S107 Clamshell

Unique acrylic chestpiece with ultra-sensitive acoustics!

- **Internal spring & sound conductor***

Colors



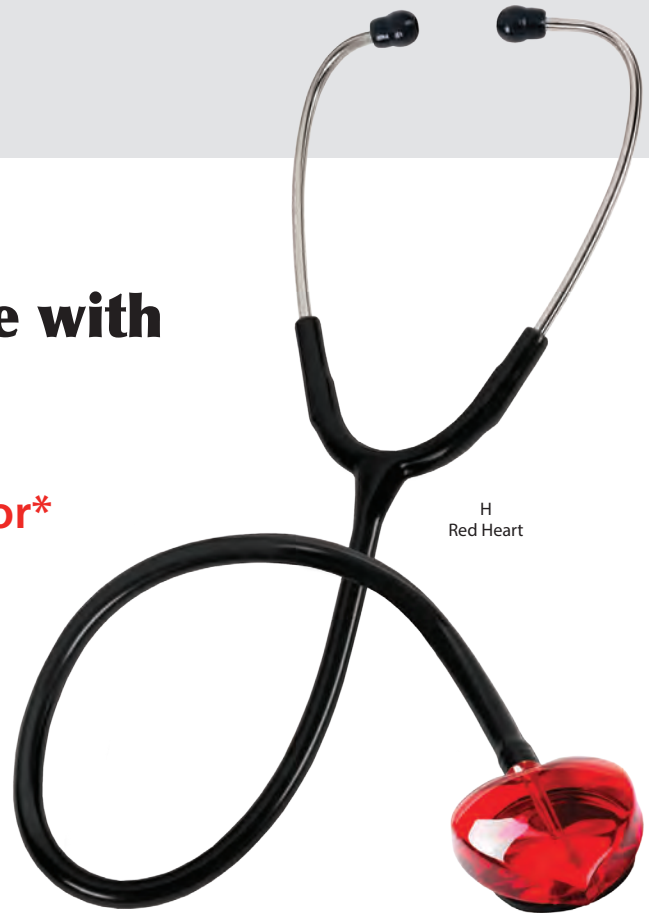
PLU
Plum



H
Red Heart



SML
Smiley Face



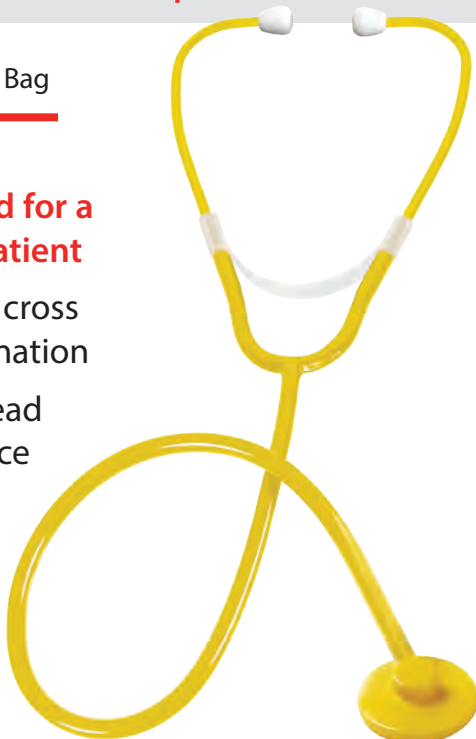
H
Red Heart

Single Patient

Disposable Stethoscope

100 Poly Bag

- **Designed for a single patient**
- Prevents cross contamination
- Single head chestpiece
- Features yellow tubing



Replacement Parts

For Stethoscopes



Visit www.prestigemedical.com for a full list of parts

* All Traditional Series stethoscopes feature our lifetime warranty with free lifetime replacement parts (model 100 excluded)

Large Silicone Clinical Eartips

CE-SIL-L Poly Bag
S-CE-SIL-L Slide Pack

Fits every Prestige model except 103, 104 and S107. Made of soft silicone. Black.



Clear PVC Clinical Eartips

CE-PVC Poly Bag
S-CE-PVC Slide Pack

Fits every Prestige model except 103, 104 and S107. Made of soft PVC. Semi-translucent.



Small Silicone Clinical Eartips

CE-SIL-S Poly Bag
S-CE-SIL-S Slide Pack

Fits every Prestige model except 103, 104 and S107. Made of soft silicone. Black.



Mushroom PVC Eartips

S-SET Slide Pack

Fits Prestige models 103, 104, (S)106 and (S)108. Made of soft PVC. Black. Mushroom-type design.



Medical Symbols Stethoscope Watch

1689 Slide Pack

Back clip attaches to most stethoscope tubing. Features medical symbols on the face. 24 hour face with step second hands. Quartz movement and a water resistant case. Includes an LR626 battery.



Stethoscope Watch

1688 Slide Pack

Same features as the 1689 watch.



BLK
Black with
White Face

GLX
Black with
Galaxy Face

Quick Equip™ Stethoscope Light

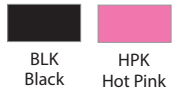
S205 Slide Pack

LED light, snaps onto a stethoscope chestpiece. Compatible with Prestige models (S)121, (S)123, (S)126, (S)124, (S)108, S125.

Not recommended for eye examinations.



HPK
Hot Pink



Hip Clip™ Stethoscope Holder

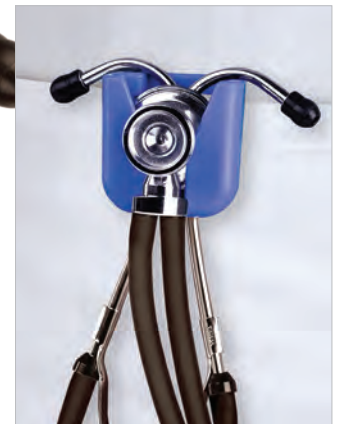
755 Hanging Card

A convenient stethoscope holder that affixes to the user's belt or waist band.

Eliminates the fatigue of wearing a stethoscope around the neck.



ROY
Royal



Stethoscope Tape Holder

754 Slide Pack

Attaches to any stethoscope tube. Keeps a roll of 1" medical tape handy. Snaps on in a second and stays out of the way until needed. The tape rolls smoothly for rapid tape removal. Made in U.S.A.



PUR
Purple



Printed Two-Sided Stethoscope ID Tag

S8 Slide Pack

Features a "domed" printed face. An adhesive closure attaches to tube.



BTG
Butterflies
Grey



BTN
Butterflies
Navy



BTG
Butterflies
Grey



DFN
Dragonflies
Navy



DFP
Dragonflies
Purple



POB
Party Owls
Black



POR
Party Owls
Royal



HBP
Hope Pink Ribbon
& Butterfly*

Two-Sided ID Tag

S4 Slide Pack

Double-sided ID tag enables identification to be written on both sides. Universal fit.



BLK
Black

CLR
Clear

CharMED™ Crystal Stethoscope Charms

CEG-0001 Header Card

- Fits most stethoscope or aneroid tubes
- Made of zinc alloy



B1A
A - Monogram



CAC
Cactus



CHT
Cheetah Print



FLM
Flamingo



CSM
Crescent Moon



SKL
Skull



SUN
Sunflower



TIG
Tiger Print



DNT
Donut



HRS
Interlocking Hearts



RSG
Rose Gold



SUR
Survivor

Over 100 styles to choose.
See them all online at:
www.prestigemedical.com

*A portion of the sale of all pink ribbon items is donated to the American Cancer Society.

3D Stethoscope Jewelry

99 Hanging Card

⚠ WARNING*

• Personalize your stethoscope with our fun 3D jewelry

• Made of copper. Attaches to most stethoscope or aneroid tubing.

Note: Does not fit on very thick tubes such as cardiology stethoscopes.



CAC
Cactus
Painted Finish



CAT
Cat
Painted Finish



COR
Corgi
Painted Finish



ELT
Elephant
Antique Tin



PIG
Pig
Painted Finish



KBT
Koala Bear
Antique Tin



PBP
Panda Bear
Painted Finish



DUP
Duck
Painted Finish



DIP
Dinosaur
Painted Finish



DOP
Donut
Painted Finish



HAP
Hamburger
Painted Finish



FFG
French Fries
Gold



PKB
Pink Ribbon
Painted Finish



ATW
Autism Awareness
White Gold



DAB
Daisy
Antique Bronze



DAC
Daisy
Antique Copper



DAT
Daisy
Antique Tin



SRR
Star
Rose Gold



SRG
Star
Gold



RAW
Rainbow
White Gold



RAB
Rainbow
Black



PAC
Paw
Antique Copper



PAT
Paw
Antique Tin



PAP
Paw
Painted Finish



TTB
Turtle
Antique Bronze



TTC
Turtle
Antique Copper



TTT
Turtle
Antique Tin



BEB
Bee
Antique Bronze



HTR
Heart
Rose Gold



HTW
Heart
White Gold



HTG
Heart
Gold



HTB
Heart
Black



HTP
Heart
Red



UCB
Unicorn Heart
Antique Bronze



UCT
Unicorn Heart
Antique Tin

* This product can expose you to metals including nickel which is known to the State of California to cause cancer. For more information go to www.P65Warnings.ca.gov

Cardiology IV™

The next generation of one of the most recognized stethoscopes in the profession, offering improved acoustic performance with better audibility of high-frequency sounds (adult side, firm pressure). Its distinctive chalice-shaped chestpiece features tunable diaphragms on both sides to deliver outstanding acoustic performance, diagnostic versatility, and convenience for treating adult and pediatric patients. The pediatric side of the chestpiece converts to a traditional open bell by removing the tunable diaphragm and replacing it with the included non-chill bell sleeve. 27" in length.



6151 - Black Tube (22")	6165 - Rainbow Chestpiece / Black Tube / Black Stem / Black Headset	6234 - High-Polish Smoke CP / Caribbean Tube / Mirror Stem / Smoke Headset
6152 - Black Tube	6200 - Black Chestpiece / Black Tube / Red Stem / Black Headset	6238 - High-Polish Smoke CP / Grey Tube / Smoke Stem / Smoke Headset
6184 - Burgundy Tube	6201 - Black Chestpiece / Black Tube / Blue Stem / Black Headset	6179 - Champagne CP / Black tube / Smoke Stem / Smoke Headset
6155 - Hunter Tube	6203 - Black Chestpiece / Black Tube / Violet Stem / Black Headset	6176 - Champagne CP / Burgundy Tube / Smoke Stem / Smoke Headset
6154 - Navy Tube	6205 - Rainbow Chestpiece / Plum Tube / Violet Stem / Black Headset	6190 - Champagne CP / Caribbean Tube / Smoke Stem / Smoke Headset
6156 - Plum Tube	6177 - Mirror CP / Black Tube / Standard Stem / Standard Headset	6241 - High-Polish Rainbow CP / Raspberry Tube / Smoke Stem / Smoke Headset
6158 - Raspberry Tube	6170 - Mirror CP / Burgundy Tube / Standard Stem / Standard Headset	6240 - High-Polish Rainbow CP / Black Tube / Smoke Stem / Smoke Headset
6159 - Rose Pink Tube	6202 - High-Polish Smoke CP / Navy Tube / Blue Stem / Black Headset	6239 - High-Polish Rainbow CP / Plum Tube / Violet Stem / Black Headset
6163 - Black Chestpiece / Black Tube / Black Stem / Black Headset	6204 - High-Polish Smoke CP / Black Tube / Champagne Stem / Black Headset	6242 - High-Polish Rainbow CP / Navy Blue Tube / Black Stem / Black Headset
6168 - Black Chestpiece / Navy Tube / Black Stem / Black Headset	6232 - High-Polish Smoke CP / Black Tube / Black Stem / Black Headset	

Classic III™

The Littmann Classic III features patented tunable technology that lets you shift between hearing high and low frequency sounds by simply adjusting how much you press on the chestpiece. High acoustic sensitivity for performing general physical assessments. The bell stays clear of dirt and debris by keeping it covered with the small diaphragm. Pediatric side converts to a traditional open bell by replacing the single-piece diaphragm with a non-chill rim. 27" in length.



5620 - Black Tube	5831 - Plum Tube	5864 - Champagne Chestpiece / Burgundy Tube / Smoke Stem / Smoke Headset
5627 - Burgundy Tube	5835 - Turquoise Tube	5870 - Rainbow Chestpiece / Black Tube / Black Stem / Black Headset
5623 - Caribbean Tube	5803 - Black Chestpiece / Black Tube / Black Stem / Black Headset	5807 - Rainbow Chestpiece / Caribbean Tube / Champagne Stem / Champagne Headset
5630 - Ceil Blue Tube	5868 - Black Chestpiece / Burgundy Tube / Black Stem / Black Headset	5806 - Rainbow Chestpiece / Raspberry Tube / Champagne Stem / Champagne Headset
5621 - Gray Tube	5809 - Copper Chestpiece / Chocolate Tube / Copper Stem / Copper Headset	5863 - Mirror Chestpiece / Navy Tube / Smoke Stem / Smoke Headset
5648 - Raspberry Tube	5811 - Smoke Chestpiece / Black Tube / Smoke Stem / Smoke Headset	5959 - Mirror Chestpiece / Ceil Blue Tube / Smoke Stem / Smoke Headset
5832 - Lavender Tube	5872 - Smoke Chestpiece / Turquoise Tube / Pink Stem / Smoke Headset	5960 - Mirror Chestpiece / Plum Tube / Pink Stem / Smoke Headset
5839 - Lemon Lime Tube	5873 - Smoke Chestpiece / Gray Tube / Violet Stem / Smoke Headset	5962 - Mirror Chestpiece / Pearl Pink Tube / Pink Stem / Smoke Headset
5622 - Navy Tube	5875 - Smoke Chestpiece / Lime Green Tube / Blue Stem / Smoke Headset	
5633 - Pearl Pink Tube	5861 - Champagne Chestpiece / Black Tube / Smoke Stem / Smoke Headset	

CORE Digital Stethoscope

Introducing Littmann's most advanced stethoscope yet. Up to 40x amplification (at peak frequency, versus analog mode), active noise cancellation and mobile sound wave visualization with Eko software.



8480 - Black Chestpiece / Black Tube, Stem & Headset

8870 - High-Polish Copper CP / Black Tube, Stem & Headset

8570 - High-Polish Rainbow CP / Black Tube, Stem & Headset

8890 - Mirror Chestpiece / Black Tube, Stem & Headset

Master Classic II

Offers efficiency in stethoscope auscultation that is unprecedented in a general examination stethoscope. The bell and diaphragm modes are incorporated into a single-sided Master chestpiece.



2144L - Black

Master Classic II - Veterinary

This version of the Master Classic II features longer tubing for Veterinary professionals. Offers efficiency in stethoscope auscultation that is unprecedented in a general examination stethoscope.



1392 - Navy

Master Cardiology

Provides the best acoustics with a solid stainless steel single-sided chestpiece. Two tubes in one design reduces noise from two tubes rubbing together. Soft sealing eartips. A patented special procedure adapter allows auscultation of difficult body parts, and pediatric or emaciated patients.



2160 - Black

2163 - Burgundy

2164 - Navy

2167 - Plum

2161 - Black Finish / Black

2175 - Brass Finish / Black

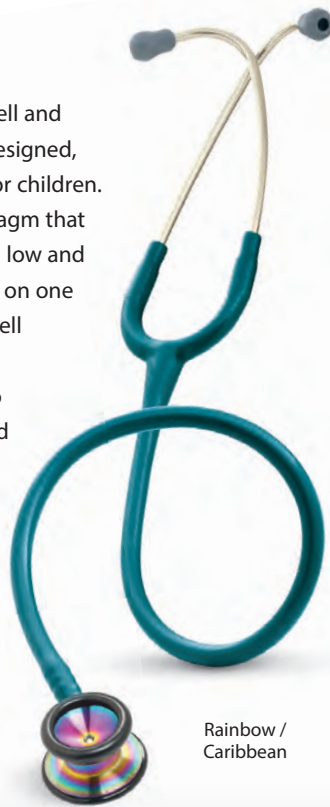
2176 - Smoke Finish / Black

Smoke / Black

Classic II - Pediatric

Features a specially designed bell and diaphragm chestpiece that is designed, sized and acoustically precise for children. Dual frequency, tunable diaphragm that allows the user to listen to both low and high frequency. The diaphragm on one side augments the traditional bell function for the opposite side. Firm pressure allows the user to hear high frequency sounds and light pressure lets them hear low frequency sounds.

2113 - Black	2122 - Raspberry
2119 - Caribbean	2113R - Red
2153 - Rainbow Finish / Caribbean Tube	



Rainbow / Caribbean

Classic II - Infant

All the same features as the Classic II Pediatric but designed, sized and acoustically precise for use with infants.

2114 - Black
2124 - Caribbean
2114R - Red
2157 - Rainbow Finish / Raspberry Tube



Red

Classic II - Teaching

The Littmann® Classic II Stethoscope has two head-sets, which allows instructor and student to perform simultaneous auscultation. Features a dual frequency, tunable diaphragm.



2138 - Black / Burgundy

Lightweight II

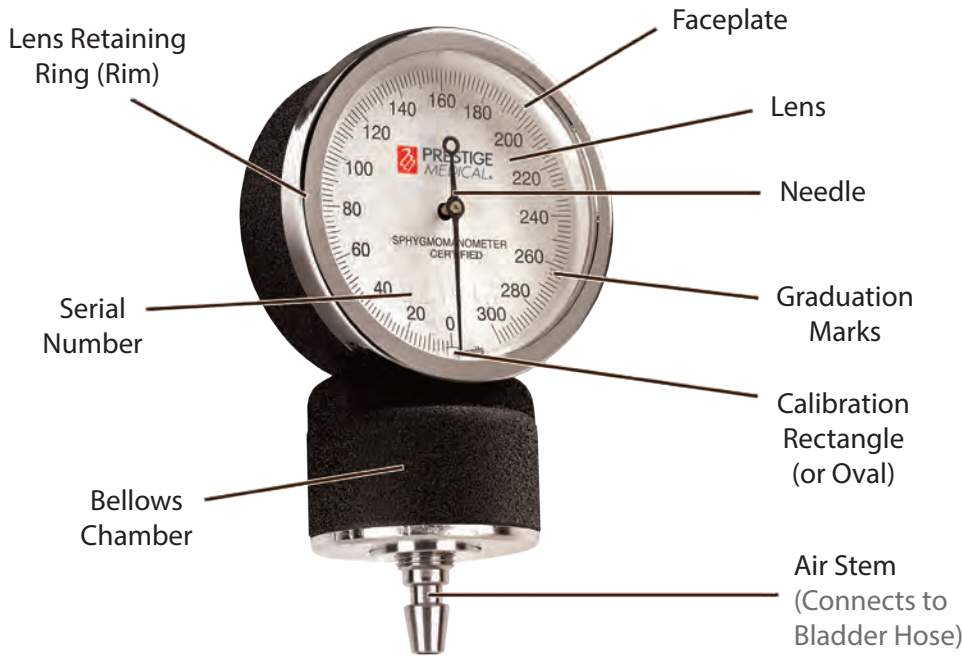
The perfect entry level and affordable choice stethoscope. The tunable diaphragm assures acoustic sensitivity and alternates between high and low frequency sounds. Features a special lightweight construction.

2450 - Black
2451 - Burgundy
2452 - Caribbean
2454 - Ceil Blue
2456 - Pearl Pink

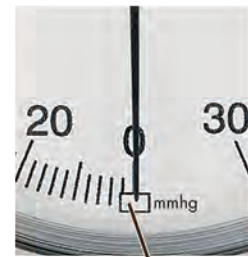


Pearl Pink

Aneroid Sphygmomanometers



Note: A gauge is still fully calibrated if the needle is inside or on the line of the calibration rectangle.



Commitment to Quality

Prestige Medical® aneroid sphygmomanometer gauges have been developed with precision and durability in mind.

Each gauge is individually tested to meet strict standards and features our Lifetime Calibration Warranty.



Build Your Own Combination Kit

While we have three popular combination kits shown in our catalog, it is just a small sample of what is possible. If you don't see a combination kit that meets your needs, simply create your own. We offer limitless combinations from hundreds of products.

Call customer support for more details.



Premium Aneroid Sphygmomanometer

Adult-Size Cuff

82 Box

S82 Clamshell

⚠ WARNING*

Features a *premium* gauge, bulb & valve!

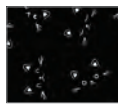
- Nylon cuff with index & range markings plus artery indicator
- Five Year Warranty with a Lifetime gauge calibration warranty



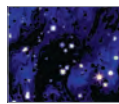
BTG Butterflies Grey



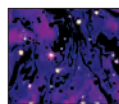
BTN Butterflies Navy



CBW Cats Black & White



GXB Galaxy Blue



GXP Galaxy Purple



LPG Leopard Print Grey



LPK Llamas Pink



LPU Llamas Purple



MSP Med Symbols Pewter



POB Party Owls Black



POR Party Owls Royal



SSN Shooting Stars Navy



CCS Tie Dye Cotton Candy Sky



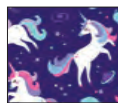
SNT Tie Dye Supernova



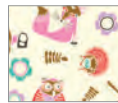
TPR Tie Dye Tropical Reef



UNB Unicorns Black



UNV Unicorns Violet



WAC Woody Animals Cream

Premium Pediatric & Infant Editions

⚠ WARNING*

82-INF Infant (Box)

82-PED Pediatric (Box)



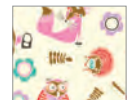
BLK Black



AQS Aqua Sea



CBL Ciel



WAC Woody Animals Cream

Premium Large Adult Aneroid Sphygmomanometer

82-OB Box

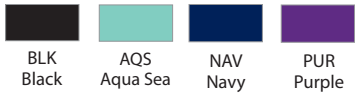
S82-OB Clamshell

 WARNING*

- Five Year Warranty with a Lifetime gauge calibration warranty



NAV
Navy



Premium Cotton Cuff Aneroid Sphygmomanometer

80 Adult (Box)

80-PED Pediatric (Box)

80-OB Large Adult (Box)

 WARNING*

- Features a black soft cotton cuff
- Five Year Warranty with a Lifetime gauge calibration warranty



Standard Adult Aneroid Sphygmomanometer

79 Box

S79 Clamshell

 WARNING*

- Five Year Warranty with a 10 Year gauge calibration warranty



ROY
Royal



Premium Aneroid Sphygmomanometer with Carrying Case

Adult-Size Cuff

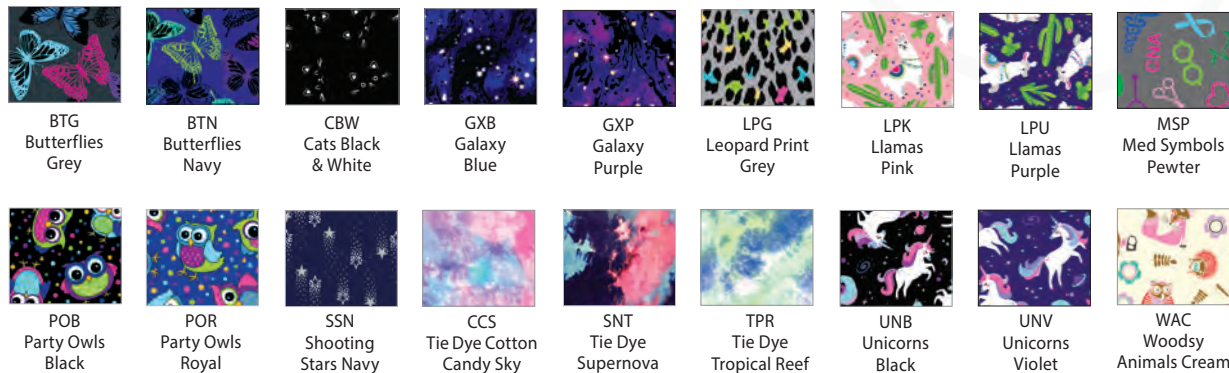
882 Clear Box

 **WARNING***

- Our best selling cuff with a matching 6" x 9" carrying case
- Five Year Warranty with a Lifetime gauge calibration warranty



TPR
Tie Dye
Tropical Reef



Extra-Large Thigh Sized Edition

882-TH Clear Box

 **WARNING***

- Includes a color-matched 6" x 9" carrying case



PUR
Purple

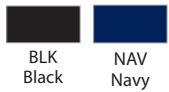


Premium Single-Hand Aneroid Sphygmomanometer

887 Clear Box

 **WARNING***

- Integrated bulb and gauge allows single hand operation
- Five Year Warranty with a Lifetime gauge calibration warranty

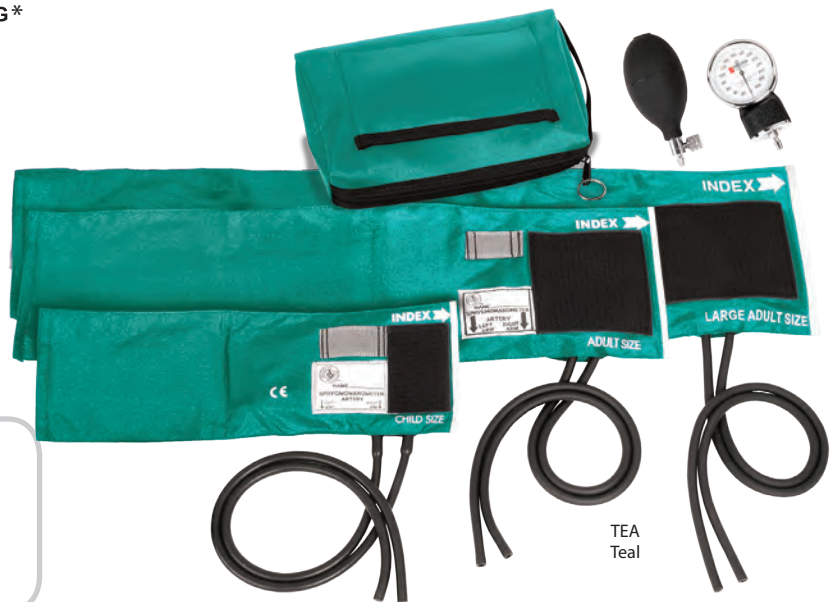


Premium 3-in-1 Aneroid Sphygmomanometer Set

882-COM Clear Box

 **WARNING***

- Includes a pediatric, adult and large adult cuff in one set
- Five Year Warranty with a Lifetime gauge calibration warranty



Replacement Parts

For Aneroid Sphygmomanometers

Visit www.prestigemedical.com for a full list of parts



*This product can expose you to DINP which is known to the State of California to cause cancer. For more information go to www.P65Warnings.ca.gov

Aneroid Sphygmomanometer / Sprague-Rappaport Combination Kit

Adult-Size Cuff

A2 Clear Box

 WARNING*

Our most popular aneroid sphygmomanometer model matched with the Sprague-Rappaport stethoscope!

- **Five Year Warranty with a Lifetime gauge calibration warranty**
- **Lifetime Warranty on stethoscope**




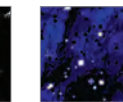
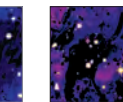
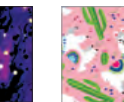
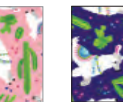










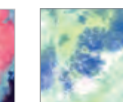










CCS Tie Dye Cotton Candy Sky

Cuff & Stethoscope Colors

	
BLK Black	AQS Aqua Sea
	
NAV Navy	PUR Purple
	
ROY Royal	TEA Teal
	
STE Stealth / Black	

Cuff Prints & Stethoscope Colors

						
BTG Butterflies Grey	BTN Butterflies Navy	CBW Cats Black & White	GXB Galaxy Blue	GXP Galaxy Purple	LPK Llamas Pink	LPU Llamas Purple
						
Neon Blue	Aqua Sea	Stealth / Black	Stealth / Black	Purple	Neon Green	Purple
						
SSN Shooting Stars Navy	CCS Tie Dye Cotton Candy Sky	SNT Tie Dye Supernova	TPR Tie Dye Tropical Reef	UNB Unicorns Black	UNV Unicorns Violet	
						
Navy	Neon Blue	Neon Pink	Aqua Sea	Aqua Sea	Hot Pink	

Aneroid Sphygmomanometer / Clinical Lite Combination Kit

A121 Clear Box

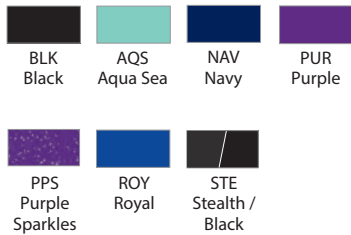
 **WARNING***

- Our best selling Clinical in an aneroid kit
- Five Year Warranty with a Lifetime gauge calibration warranty
- Lifetime Warranty on stethoscope

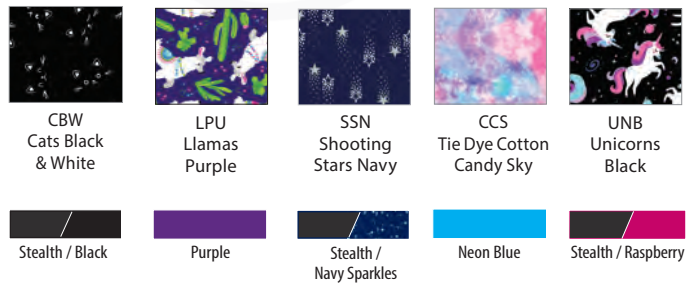


SSN Shooting Stars Navy

Cuff & Stethoscope Colors



Cuff Prints & Stethoscope Colors



Aneroid Sphygmomanometer / Sprague-Rappaport Kit with Pocket Organizer & Medimeter

A5 Clear Box

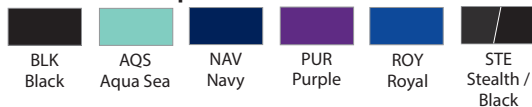
 **WARNING***

- Five Year Warranty with a Lifetime gauge calibration warranty
- Lifetime Warranty on stethoscope



AQS Aqua Sea

Cuff & Stethoscope Colors

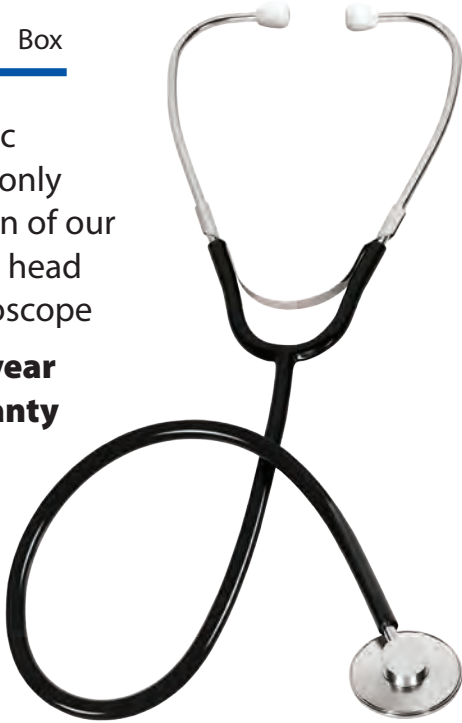


* This product can expose you to DINP which is known to the State of California to cause cancer. For more information go to www.P65Warnings.ca.gov

Basic Single Head Stethoscope

103 Box

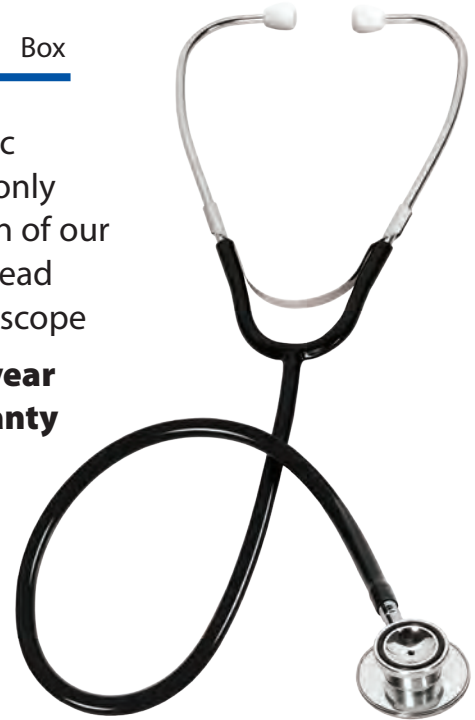
- A basic black only version of our single head stethoscope
- **One year warranty**



Basic Dual Head Stethoscope

104 Box

- A basic black only version of our dual head stethoscope
- **One year warranty**



Basic Sprague-Rappaport Stethoscope

105 Box

- A basic black only version of our Sprague-Rappaport stethoscope
- **One year warranty**



Basic SpragueLite® Stethoscope

110 Box

- A basic black only version of our SpragueLite® stethoscope
- **One year warranty**



Basic Aneroid Sphygmomanometer

70 Adult (Box)
70-OB Large Adult (Box)

 **WARNING***

- A basic black only version of our standard aneroid sphygmomanometer
- Available in two cuff sizes
- **One year warranty**



Basic Aneroid Sphygmomanometer Combination Kits

A1-103 Single Head Kit (Box)
A1-104 Dual Head Kit (Box)
A1-105 Sprague-Rappaport Kit (Box)
A1-110 SpragueLite® Kit (Box)

 **WARNING***

- A basic model 70 aneroid sphygmomanometer and carrying case with your choice of a basic stethoscope
- **One year warranty**



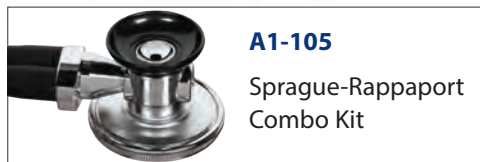
A1-103

Single Head
Combo Kit



A1-104

Dual Head
Combo Kit



A1-105

Sprague-Rappaport
Combo Kit



A1-110

SpragueLite®
Combo Kit

Deluxe Pulse Oximeter

459 Box

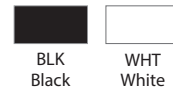
- **Fingertip measurement of SpO₂% (O₂ saturation) and pulse rate**
- Bright LED display
- Nylon case, lanyard and batteries included
- One year warranty



NEW Pulse Oximeter

452 Box

- **Fingertip measurement of SpO₂% (O₂ saturation) and pulse rate**
- LCD display
- Lanyard and batteries included (No case)
- One year warranty



HealthMate® Premium Blood Pressure Monitor

 WARNING*

HM-35 Box

- **Fully automatic digital blood pressure and pulse rate monitor**
- Displays in bar graph form for easy reading
- Irregular heartbeat detector
- Memory recall of 99 readings
- Includes batteries & zippered storage case
- Two year warranty
- *Stand alone large adult cuff size available*



Large Adult Blood Pressure Monitor

HM-30-OB Box

 WARNING*

- Features a cuff for large adults
- Fully automatic digital blood pressure and pulse rate monitor
- Same features as the HM-35
- Includes batteries & nylon case
- Two year warranty
- *Stand alone large adult cuff size available*



WristMate® Premium Blood Pressure Monitor

HM-55 Box

 WARNING*

- Automatic blood pressure measurement from the wrist
- Includes batteries and hard shell storage case
- Two year warranty



* This product can expose you to Bisphenol A (BPA), which is known to the State of California to cause birth defects or other reproductive harm. For more information go to www.P65Warnings.ca.gov

Traditional Home Blood Pressure Monitor

81 Adult Size (Box)

 WARNING**

81-OB Large Adult Size (Box)

- Features an internal D-Ring for self fastening and an attached single head stethoscope
- Lifetime gauge calibration warranty



** This product can expose you to DINP which is known to the State of California to cause cancer. For more information go to www.P65Warnings.ca.gov

Non-Contact Infrared Thermometer

DT-32 Box

- Features an updated sensor for more accurate readings
- Backlit LCD display screen
- Fahrenheit or Celsius modes
- Batteries included
- Two year warranty



Mini Non-Contact Infrared Thermometer

DT-30 Box

- Fast & accurate readings with a compact design
- Backlit LCD display screen
- Fahrenheit or Celsius modes
- Batteries included
- One year warranty



Non-Contact Infrared Thermometer

DT-29 Box

- Fast & accurate readings
- Backlit LCD display screen
- Fahrenheit or Celsius modes
- Batteries included
- One year warranty



Standard Digital Thermometer

DT-7 Box

- Measures in Fahrenheit or Celsius
- 60 second readings
- Battery included
- One year warranty



Buck Neurological Hammer

26 Slide Pack

- Dual PVC bumpers for multiple reflex tests
- Removable neurological pin
- Removable neurological brush
- 6¾" chrome plated handle



Queen Square Hammers

23 14 inch
23-S 11½ inch

- Features a nylon plastic handle
- Tapered handle base
- PVC bumper ring
- Poly bag packaging



Babinski Telescoping Reflex Hammer

24 Slide Pack

- Features a 14" telescoping handle
- Allows for different percussion forces
- PVC bumper ring
- Convenient to carry in pocket
- Tapered handle base



Ergonomic Hammer

22 Slide Pack

- Combines the features of the Taylor Hammer with a neurological hammer
- Retracting filament mounted at the base
- 6" anodized handle



Economy Taylor Hammer

28 Poly Bag

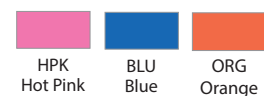
- Tapered handle to elicit plantar reflexes
- 7½" chrome plated handle & PVC bumper
- Available in Burnt Orange only



Taylor Hammer

25 Slide Pack

- Tapered handle to elicit plantar reflexes
- 7½" chrome plated handle & PVC bumper



Soft LED Pupil Gauge Penlight

214 Poly Bag
S214 Slide Pack
214-AST Cylinder (20)

- Pupil gauge imprint
- Metal construction
- Push button activated
- Includes one AAA battery



QuickLite™ Pupil Gauge Penlight

229 Poly Bag
S229 Slide Pack
229-CYL Cylinder (20)

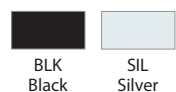
- Pupil gauge imprint
- Metal construction
- Push button activated
- Standard illumination
- Includes two AAA batteries



QuickLite™ Penlight

222 Poly Bag
S222 Slide Pack
222-AST Cylinder (20)

- Metal construction
- Standard illumination
- Push button activated
- Includes two AAA batteries



PocketLite® Penlight

260 Poly Bag
S260 Slide Pack
260-AST Cylinder (20)

- Clip activated
- Standard illumination
- Plastic construction
- Includes two AAA batteries



Disposable Penlight

200 Poly Bag
S200 Slide Pack
200-AST Cylinder (22)

- Clip activated
- Plastic construction



Pupil Gauge Disposable Penlight

210 Poly Bag
S210 Slide Pack
210-CYL Cylinder (22) WHT only
210-AST Cylinder (22) AST. Colors

- **Clip activated**
- Standard illumination
- Pupil gauge imprint

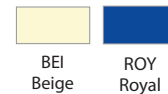


Standard Pocket Otoscope

⚠ WARNING*

3420 Slide Pack

- **Dual-focused standard illumination with 2.5X magnification**
- Includes five sizes of reusable specula
- Otoscope head can be removed to convert into penlight
- Includes two AAA batteries



Xenon Pocket Otoscope

3470 Slide Pack

- **6000 candle power xenon lamp with 3X magnification**
- Comes with one reusable specula (cold autoclavable)
- Includes two sizes of disposable specula and converter by Welch Allyn®
- Head can be removed to convert into penlight/flashlight
- Includes two AAA batteries



Mini OtoLite® Otoscope

3430 Slide Pack

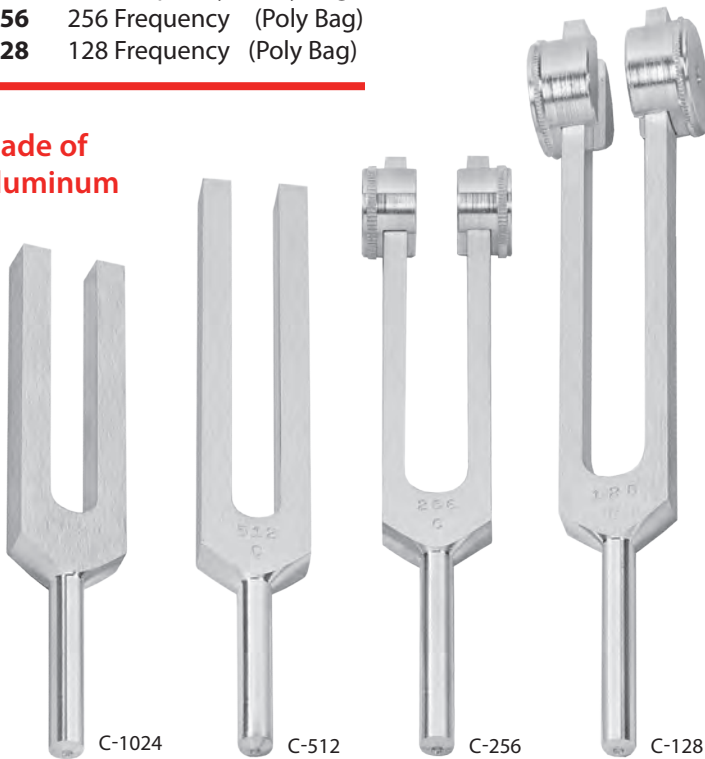
- **Dual-focused standard illumination with 2X magnification**
- Multi-functional design
- Includes one reusable specula (cold autoclavable)
- Two sizes of disposable specula
- Otoscope head can be removed to convert into penlight
- Includes two AAA batteries



Tuning Forks

- C-1024** 1024 Frequency (Poly Bag)
- C-512** 512 Frequency (Poly Bag)
- C-256** 256 Frequency (Poly Bag)
- C-128** 128 Frequency (Poly Bag)

- Made of aluminum



Economy EKG Calipers

36 Slide Pack

- Constructed of Zinc Alloy
- Plastic cover with molded ruler to aid with measurements



German EKG Calipers

WARNING*

46 Slide Pack

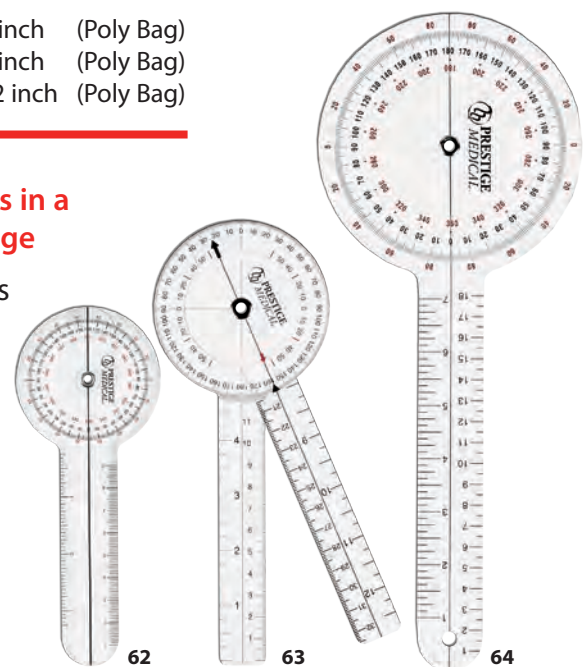
- Constructed of Nickel-Plated Brass
- Plastic cover with molded ruler to aid with measurements
- Made in Germany



Protractor Goniometers

- 62** 6 inch (Poly Bag)
- 63** 8 inch (Poly Bag)
- 64** 12 inch (Poly Bag)

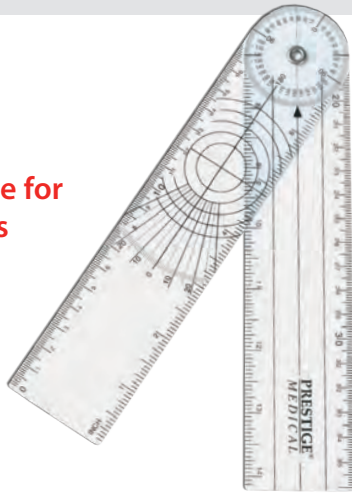
- Measures in a 360° range
- Conforms to ISOM standards
- Made of heavy-gauge clear plastic



GonioMeter

47 Poly Bag

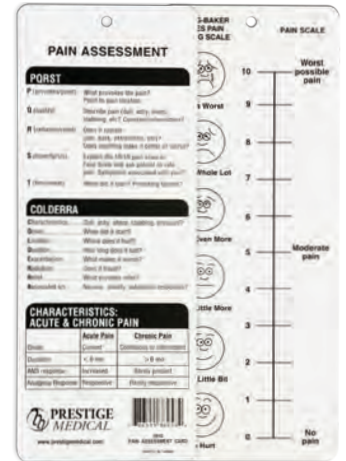
- Imprinted guide for gauging angles
- Conforms to ISOM standards
- Measures a 360° range



Pain Assessment Card

3910 Poly Bag

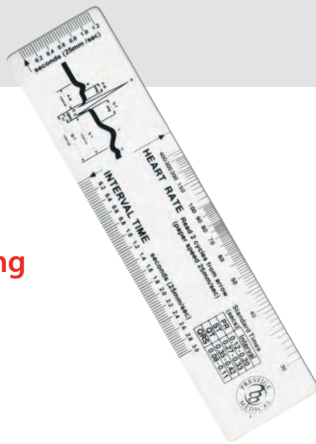
- Uses Wong-Baker Faces for pain rating scale
- Includes PQRST and COLDERRA pain assessment descriptions



CardioMeter®

31 Poly Bag

- Ruler for interpreting EKG waveforms
- Made from heavy-gauge clear plastic



MediMeter™

49 Poly Bag

- Wound diameter and pupil dilation gauge
- Made from heavy-gauge clear plastic



Snellen Eye Chart

3909 Poly Bag

- 18.5cm x 10cm



Jaeger Eye Chart

32 Poly Bag

- 17.5cm x 12cm



Pocket Eye Chart

3908 Poly Bag

- 16cm x 9cm



LifeMask® CPR Resuscitator

M20 Poly Bag

- Features a latex free air cushion
- One-way valve with anti-viral filter
- Comes in a hard shell storage case



CPR Resuscitator

M10 Poly Bag

- Latex free air cushion
- One-way valve with anti-viral filter
- Head strap
- Comes in a hard shell storage case with lanyard



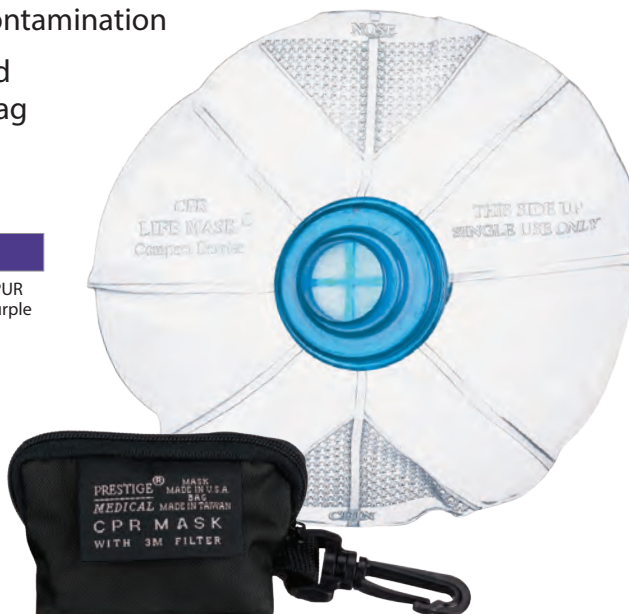
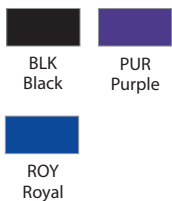
CPR LifeMask® in Nylon Keychain Bag

M2 Poly Bag



- Single use CPR mask with 3M Filtrete™ filter
- One-way valve prevents cross-contamination
- Zippered nylon bag

Bag Colors



Fountain Syringe Kit

4220 Clear Box

- 2 qt. capacity
- Made of natural rubber latex
- Can hold both cold or hot liquids



Nylon Gait Belt

- 622** Plastic Buckle (Slide Pack)
- 623** Metal Buckle (Slide Pack)

Plastic or metal buckle. Made of heavy duty nylon. Supports up to 400 lbs. 58" in length.



HPK
Hot Pink

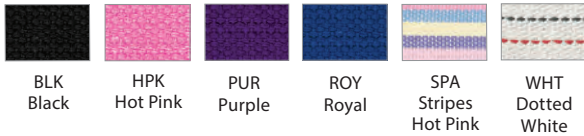


ROY
Royal

Cotton Gait Belt with Metal Buckle

- 621** Slide Pack

Metal buckle. Supports up to 400 pounds. 58" in length.



SPA
Stripes
Hot Pink

Cotton Gait Belt with Plastic Buckle

- 620-WHT** Slide Pack

Quick release plastic buckle. Supports up to 400 pounds. 58" in length.



Long Cotton Gait Belt with Metal Buckle

- 621L-WHT** Slide Pack

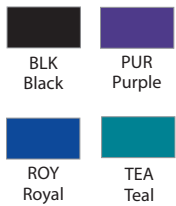
Metal buckle. Supports up to 400 pounds. 72" in length.



7½" EMT Utility Scissor

87 Slide pack

- Made of 420 stainless steel
- Milled shear serrations
- Color-matched tips
- Autoclavable (143°C / 290°F)



TEA
Teal

7½" Premium Fluoride Scissor

607 Box

- Non-stick surface for cutting tape or bandages
- 420 stainless steel
- Milled shear serrations
- Autoclavable (143°C / 290°F)



ROY
Royal

5½" Nurse Utility Scissor

870 Slide Pack

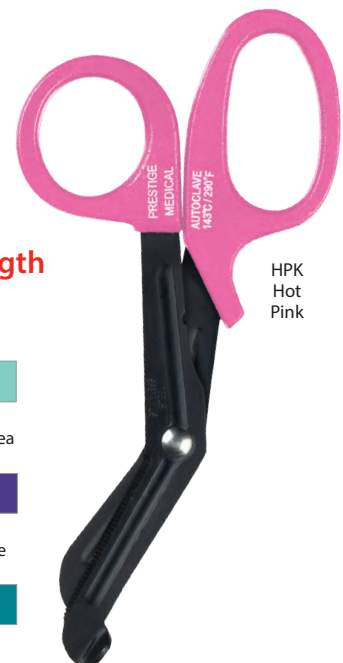
- Same features as the 87 scissor but 5½" in length



RBP
Rainbow Purple

605 Box

- Same features as the 607 but 5½" in length



HPK
Hot Pink

5½" StyleMate™ Printed Utility Scissor

871 Slide Pack

- Features molded plastic handles with our prints coated on the blades
- Made of 420 stainless steel
- Milled shear serrations
- Color-matched safety tips



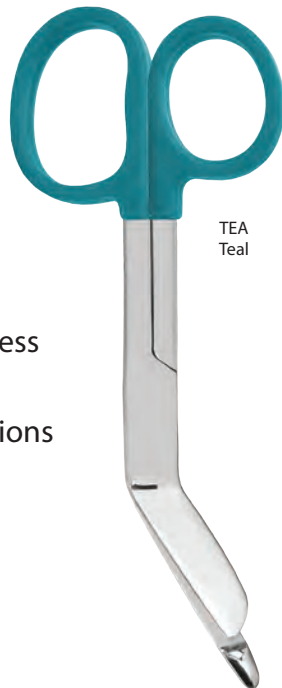
TPR
Tie Dye
Tropical Reef



5½" ListerMate® Large Ring Bandage Scissor

854 Slide Pack

- Features molded plastic handles with one large ring
- Made of 420 stainless steel, satin finish
- Milled shear serrations
- Autoclavable (143°C / 290°F)



TEA
Teal



5½" ListerMate® Bandage Scissor

853 Slide Pack

- Features exclusive molded plastic handles
- 420 stainless steel
- Lister design
- Autoclavable (143°C / 290°F)



GBL
Galaxy
Blue



*A portion of the sale of all pink ribbon items is donated to the American Cancer Society

Lister Bandage Scissors

Slide Pack

- Made of stainless steel
- Autoclavable (143°C / 290°F)



33
3½" Bandage



43
4½" Bandage



42
4½" Bandage
(Gold Plated)



41
4½" with
Tensionrite™ Clip



44
4½" with
Large Ring



53
5½" Bandage



52
5½" Bandage
(Gold Plated)



53-STE
5½" Bandage
(Stealth Finish)



53-RAI
5½" Bandage
(Rainbow Finish)



53SR
5½" Bandage
(Serrated)



60
5½" Left-
Hand Bandage



51
5½" with
Tensionrite™ Clip



54
5½" with
Large Ring



73
7¼" Bandage
with Large Ring



73-STE
7¼" Bandage
with Large Ring
(Stealth Finish)



73SR
7¼" Bandage
- Serrated

Specialty / Dressing Scissors

Slide Pack

- Made of stainless steel
- Autoclavable (143°C / 290°F)



48
4 1/2" Iris



50
5 1/2" Stitch



56
5 1/2"
Metzemaum



65
5 1/2" Mayo
Dissecting



55
5 1/2" Dressing
Curved



57
5 1/2" Dressing
(sh/bl)



57-STE
5 1/2" Dressing
(sh/bl)
(Stealth Finish)



58
5 1/2" Dressing
(sh/sh)



59
5 1/2" Dressing
(bl/bl)

5 1/2" ColorMate® Lister Bandage Scissor

875 Slide Pack

- Color-dipped handles
- Made of stainless steel
- Autoclavable (143°C / 290°F)



RGD
Rose
Gold

CBU
Candy
Swirls
Blue

CPK
Candy
Swirls
Pink

CPR
Candy
Swirls
Purple



CPK
Candy
Swirls
Pink

5 1/2" Lister Bandage Scissor Heart Edition

864 Slide Pack

- Color-dipped, heart-shaped handle
- Made of stainless steel
- Autoclavable (143°C / 290°F)



BLK
Black

PUR
Purple

RED
Red



RED
Red

Forceps

Slide Pack

- Made of stainless steel
- Autoclavable (143°C / 290°F)



530
3 1/2"
Mosquito



520
5"
Halstead
Mosquito



510
5 1/2"
Crile



503
5 1/2"
Olsen-Hegar
Needle Holder /
Scissor



500
5 1/2"
Kelly



502
5 1/2"
Kelly
(Gold Plated)



500-STE
5 1/2"
Kelly
(Stealth Finish)



500-RAI
5 1/2"
Kelly
(Rainbow Finish)

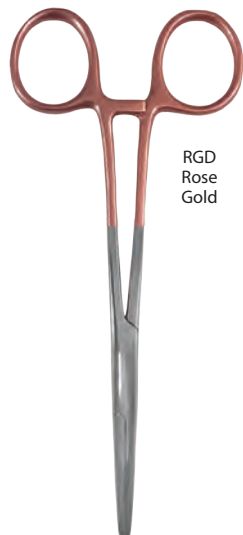


501
5 1/2"
Kelly
(curved)

5 1/2" ColorMate® Kelly Forceps

504 Slide Pack

- Color-dipped handles
- Made of stainless steel
- Autoclavable (143°C / 290°F)



RGD
Rose
Gold



BLK Black HPK Hot Pink PUR Purple



RGD Rose Gold ROY Royal TEA Teal CBU Candy Swirls Blue CPK Candy Swirls Pink CPR Candy Swirls Purple

Specialty Forceps & Probe

Slide Pack

- Made of stainless steel
- Autoclavable (143°C / 290°F)



481
3 1/2"
Micro
Point



480
4 1/2"
Splinter
(sharp)



490
4 1/2"
Thumb
Dressing



485
4 1/2"
S/S
Tissue



560
5 1/2"
Thumb
Dressing



482
4 1/2"
Magnifying
Splinter



495
6 1/2"
Huber
Mall Probe

Student Dissecting Kit

VK-1 Poly Bag

Tri-fold eyeglass-style case (VK-CASE).

- 265** Two Straight Teasing Needles with Handles
- 294** Glass Medicine Dropper
- 1560** S/S 5½" Thumb Dressing Forceps
- 147** Student Dissecting Scissor
- 273** S/S Scalpel Handle (No. 3)
- 278-10** Scalpel Blade (No. 10)
- 299** Set of Six Dissecting Pins
- 295** Clear Plastic Ruler



Standard Dissecting Kit

DK-1 Poly Bag

Hard plastic case (DK-CASE) with fitted slots.

- 265** Two Straight Teasing Needles with Handles
- 147** Student Dissecting Scissor
- 294** Glass Medicine Dropper
- 1490** 4½" Thumb Dressing Forceps
- 273** S/S Scalpel Handle (No. 3)
- 278-10** Scalpel Blade (No. 10)
- 299** Set of Six Dissecting Pins
- 295** Clear Plastic Ruler



Anatomy Dissecting Kit

AK-1 Poly Bag

Velour lined zippered case (AK-CASE).

- 265** Two Straight Teasing Needles with Handles
- 1490** 4½" Thumb Dressing Forceps
- 1480** 4½" Sharp Splinter Forceps
- 148** 4½" Iris Scissor
- 158** 5½" Dressing Scissor (sh/sh)
- 274** S/S Scalpel Handle (No. 4)
- 273** S/S Scalpel Handle (No. 3)
- 278-21** Two Scalpel Blades (No. 21)
- 278-10** Scalpel Blade (No. 10)
- 292** Magnifying Glass
- 1495** Huber Mall Probe
- 264** Fish Hooks (3 Pack)



Lab Coats & Consultation Jackets

5720 Womens Lab Coat
5740 Womens Consultation Jacket

5710 Mens Lab Coat
5730 Mens Consultation Jacket

• Made with a durable 5oz. twill fabric with bar tack stitching at stress points

- 65% Polyester, 35% Cotton
- One chest pocket and two patch pockets and set-in back belt

MEN'S
S - 5X

WOMEN'S
XS - 5X

5740



5710



MED Sleeves™

MS Knitted (Regular)
MSX Spandex (Reg-Large)
MSX-S Spandex (Small)

• Get the two-shirt look without the two-shirt restrictions

- Slide over your arms to provide extra warmth
- Available in both Knitted and Spandex styles
- 17" in length

Dozens of styles to choose. See them at :
www.prestigemedical.com



Compression Gloves

600-BLK-ES Small / Medium
600-BLK-EL Large / X-Large

• Made from Copper Ion fabric with minerals
 • Reflects far Infra-Red light back in the body, originating the joints and muscles

- Relieves swelling and discomfort associated with arthritis
- Increases blood flow to inflamed areas
- Made in the U.S.A.



Unisex T-Shirts

810-M Medium

810-L Large

- Made of 4.5 oz. weight ring spun cotton
- Features a 1x1 rib knit collar
- Removable tag for comfort & relabeling
- Shoulder to shoulder back neck tape



RCB
RN Caduceus
on Blue



ENB
Emergency
Nurse on Blue



ENG
Emergency
Nurse on Grey



RCB
RN Caduceus
on Blue



RCG
RN Caduceus
on Grey

Womens T-Shirts

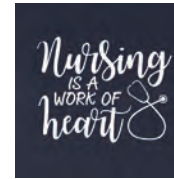
811-M Medium

811-L Large

- Made of 100% cotton
- 5.3 oz. weight fabric
- Seamless double-needle 1/2" collar
- Cap sleeves
- Taped neck and shoulders
- Tear away label



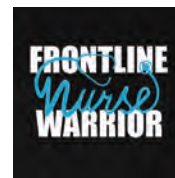
WHG
Work of Heart
on Grey



WHN
Work of Heart
on Navy



FWC
Frontline Warrior
on Ciel Blue



FWB
Frontline Warrior
on Black



NLB
Nurse Life
on Black



NLW
Nurse Life
on White



NHC
Nurse Heart
on Ciel Blue

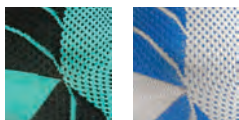


NHP
Nurse Heart
on Pastel Pink

Plantar Fasciitis Sock

384-EM Medium
384-EL Large

Anti-fatigue compression foot sleeve with a seamless design. Relief for heel, arch, ankle, plantar fascia & more. Increases blood flow to inflamed areas.



BSB
Black /
Sea Blue

WSB
White /
Sky Blue

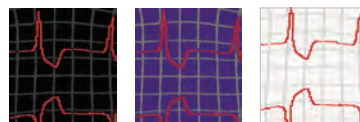
Features 7 Zones of Compression

Nurse Ankle Sock

377 Hanging Card

Made of 80% cotton, 15% nylon, and 5% Lycra® Spandex.

- **Mens size : 4-8**
- **Womens size : 5-9**



HBK
EKG on
Black

HPU
EKG on
Purple

HRB
EKG on
White

Performance Sock

389 Hanging Card

Made from Rayon bamboo, a natural moisture wicking, bacteria resistant fabric. Cushioned sole & arch support. Made in the U.S.A.

- **Mens size : 5-10**
- **Womens size : 6-11**



RHP-EM
Pink Ribbons
Hot Pink*



12" Mens Premium Compression Sock

392 Hanging Card

15-18 mmHg. 65% nylon and 35% Lycra® Spandex. Knitted prints. 12" in length. Single pairs.

- **Mens size : 8-12**
- **Womens size : 9-13**



SHO
Sharks
Ocean
Blue



12" Standard Compression Sock

397 Hanging Card

10 mmHg. Made of 65% nylon and 35% Lycra® Spandex. 12" in length.

- Mens size : **4-8**
- Womens size : **5-9**



12" Large Calf Compression Sock

399 Hanging Card

Designed for larger calf sizes. 15-18 mmHg. Made of 65% nylon and 35% Lycra® Spandex. 12" in length.

- Mens size : **4-8**
- Womens size : **5-9**



9" Standard Compression Sock

396 Hanging Card

A shorter 9" version of our standard compression sock. 10 mmHg. Made of 65% nylon and 35% Lycra® Spandex.

- Mens size : **4-8**
- Womens size : **5-9**



Cushioned Crew Sock

391 Hanging Card

High density cushioning for added comfort. Made of 77% soft combed cotton, 21% nylon and 2% Lycra® Spandex.

- Mens size : **4-8**
- Womens size : **5-9**



Soft Comfort Compression Sock

387 Hanging Card

15-20 mmHg. Made of 77% polyester, 15% nylon, and 8% Lycra® Spandex. Sublimated prints. 12" in length. Single pairs.

- Mens size : 4-8
- Womens size : 5-9



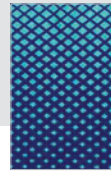
AUT Autism



BTG Butterflies Grey



DON Donuts



DMP Dot Matrix Aqua & Purple



GAQ Galaxy Aqua



GJB Galaxy Jet Black



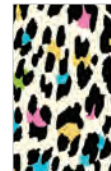
LPU Llamas Purple



LPK Llamas Pink



LPW Llamas Periwinkle



LPC Leopard Print Cream



LPG Leopard Print Grey



LHP Leopard Print Hot Pink



MSB Med Symbols Black*



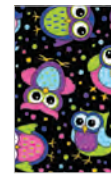
MSP Med Symbols Pewter*



NLT Northern Lights



OPB Purple & Blue Ombré



POB Party Owls Black



RHB Ribbons & Hearts Black*



TMB Triangle Matrix Blue



UNB Unicorns Black



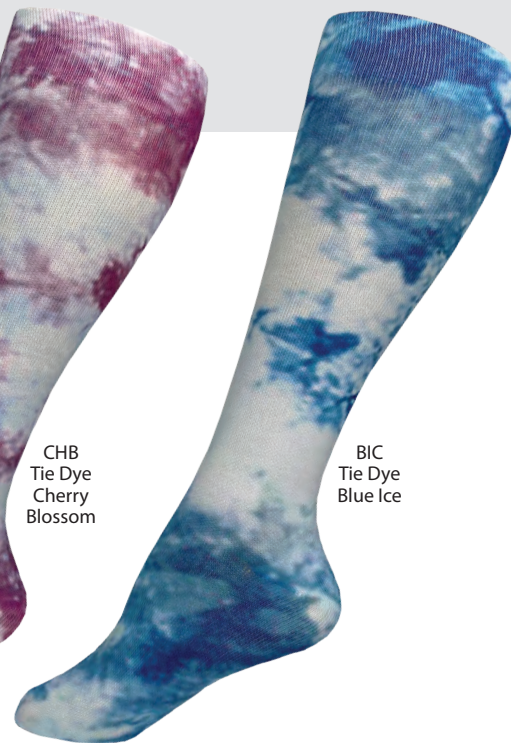
UNV Unicorns Violet

Soft Comfort Tie Dye Compression Sock

387T Hanging Card

15-20 mmHg. Made of 77% polyester, 15% nylon, and 8% Lycra® Spandex. Sublimated prints. 12" in length. Single pairs.

- Mens size : 4-8
- Womens size : 5-9



Premium Knit Compression Sock

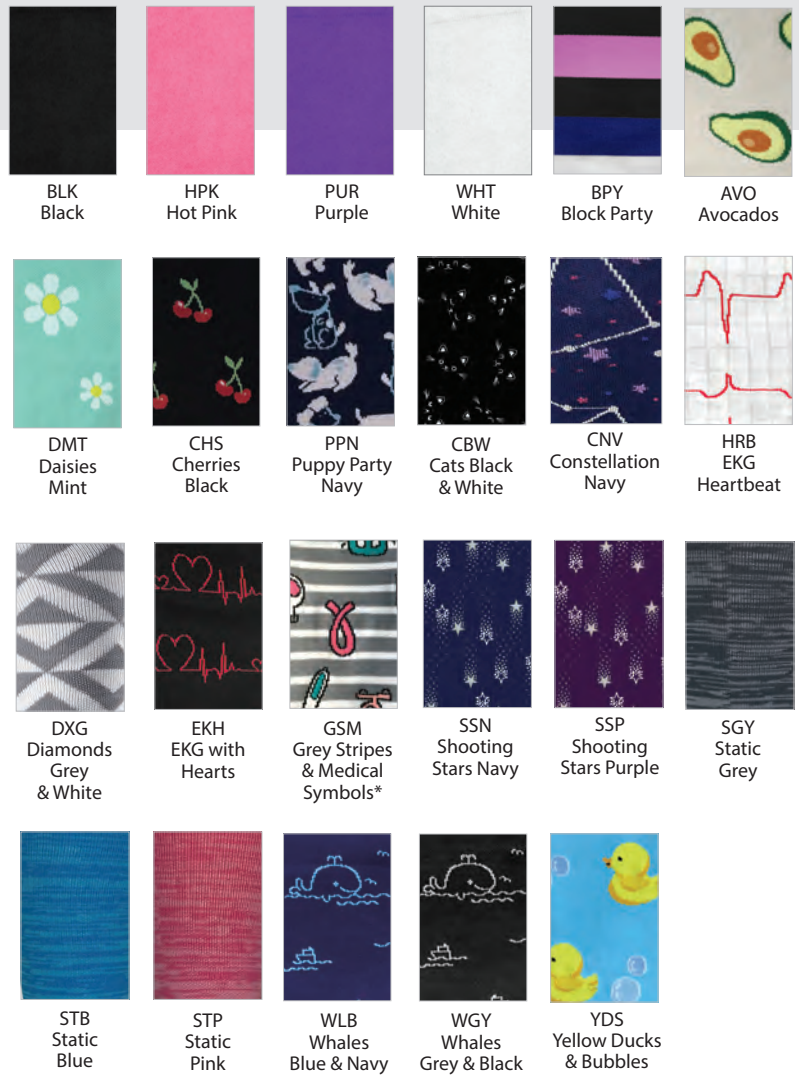
386 Hanging Card

15-18 mmHg.
Made of 65% nylon and 35% Lycra® Spandex.
Knitted prints.
12" in length.
Single pairs.

- Mens size : 4-8
- Womens size : 5-9



YDS Yellow Ducks & Bubbles



Cap Case

15 Unpackaged

Storage case for nurse caps. Keeps caps professionally white and clean. Cap not included.



Custom Patches

Design your own custom patches in a wide range of styles.

Contact customer support for details.

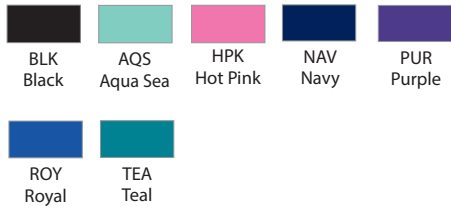


*A portion of the sale of all pink ribbon items is donated to the American Cancer Society.

Colored Full Frame Adjustable Eyewear

5400 Slide Pack

Anti-fog, anti-static and anti-scratch Polycarbonate lenses. Meets ANSI Z87.1 standards. UV 400 protection.



Colored Temple Eyewear

5300 Slide Pack

Anti-fog, anti-static and anti-scratch Polycarbonate lenses. Meets ANSI Z87.1 standards. UV 400 protection.



Sport Frame Eyewear

5430-BLK Slide Pack

Anti-fog, anti-static and anti-scratch Polycarbonate lenses. Meets ANSI Z87.1 standards. UV 400 protection. Black frames.



Printed Full Frame Adjustable Eyewear

5420 Slide Pack

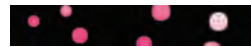
Anti-fog, anti-static and anti-scratch Polycarbonate lenses. Meets ANSI Z87.1 standards. UV 400 protection.



CAP
Cappuccino



LPP
Leopard Purple



PKD
Polka Dots



ROS
Rose



Visitor / Student Glasses

5900 Poly Bag

Made in USA by Uvex and designed for general use. Features fixed side shields for improved protection.



Splash Goggles

5600 Poly Bag

Fog resistant, meets ANSI Z87.1 standards. Designed to protect the wearer from liquid splash by using covered vents.



Belt Loop Organizer Kit

- 731** Full Kit (Slide Pack)
730 Organizer Only (Slide Pack)

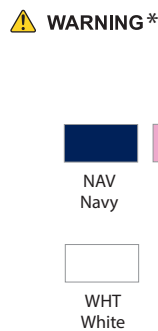
4 pocket organizer features a loop on the back that fits most belts. Comes with a 5½" Lister bandage scissor, disposable pupil gauge penlight and 4-color chart pen.



Belt Loop Organizer DX™ Kit

- 736** Slide Pack

4 pocket organizer features a loop on the back that fits most belts. Comes with a 5½" Lister bandage scissor, 5½" Kelly forceps, disposable pupil gauge penlight and 4-color chart pen.



Belt Clip Organizer Kit

- 733** Full Kit (Slide Pack)
732 Organizer Only (Slide Pack)

4 pocket organizer features a plastic clip on the back. Comes with a 5½" Lister bandage scissor, disposable pupil gauge penlight and 4-color chart pen.



5 Pocket Organizer Kit

741-WHT Full Kit (Slide Pack)
740-WHT Organizer Only (Slide Pack)

 **WARNING***

This 5 pocket organizer features an extra pocket on the back.

Comes with a 5½" Lister bandage scissor, disposable pupil gauge penlight and a 4-color chart pen.


 WHT
 White



Utility Organizer Kit

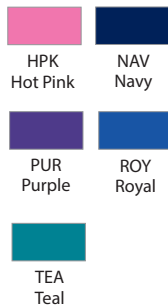
742 Slide Pack

 **WARNING***

5 pocket organizer (white) with a key chain clip and "hook-and-loop" tabs to secure instruments.

Includes a 5½" Utility scissor, a color-matched disposable penlight and 4-color chart pen.

Scissor Colors



ROY
Royal

7 Pocket Organizer Belt

652 Slide Pack

 **WARNING***

This 7 pocket organizer is perfect for storing all of your instruments and tools. Features a 50" adjustable belt with a quick release plastic buckle. Comes equipped with one tape loop and two "hook-and-loop" tabs to secure instruments. Made of nylon. Dimensions: 8" x 8¼".


 BLK
 Black



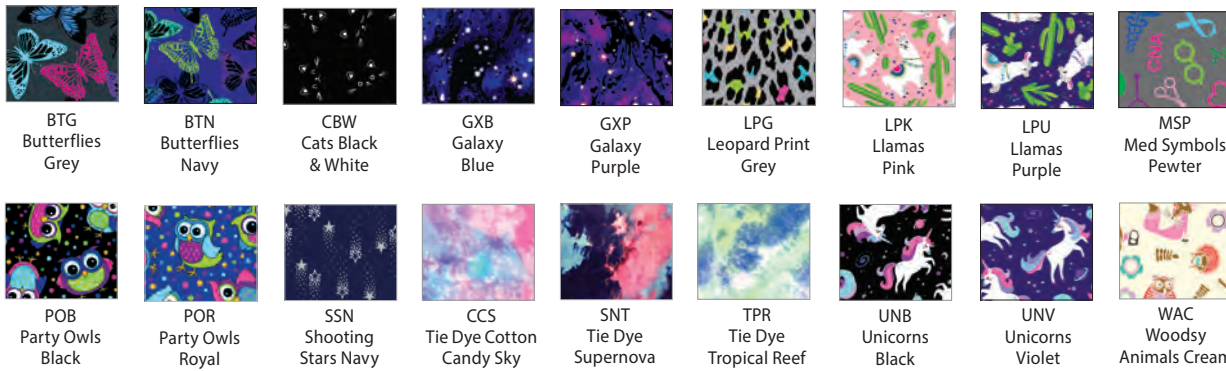
Compact Carrying Case

745 Poly Bag

Nylon zippered carrying case ideal for storing instruments and accessories.
 "Hook-and-loop" closure front pocket.
 Nylon handle. Dimensions: 6" x 9".



SSN
Shooting
Stars Navy

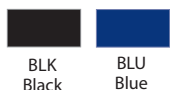


Nurses Mesh Utility Tote Bag

717 Poly Bag

⚠ WARNING*

This full-sized mesh bag features a zippered top on the main compartment. Three extra pockets (two on the side and one in the front) provide plenty of storage for smaller items. Handle features a "hook-and-loop" closure for added comfort. Made of polyester. Dimensions: 22" x 14" x 7.5".



Large Tote Bag

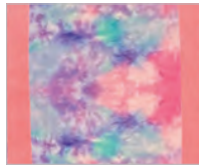
705 Poly Bag

 WARNING*

Inside key fob & pocket with a water-resistant lining.
Hook-and-loop closure top. Dimensions: 12" x 14" x 2".



STG
Stick
Nurse



TDP
Tie Dye
Pastel Pink



TDT
Tie Dye
Turquoise



Extra Large Tote Bag

707 Poly Bag

 WARNING*

This extra large tote features a fun tie dye print over the whole bag. Made of a durable and waterproof polyester. Includes an internal zippered pocket perfect for securing smaller items. Hook-and-loop closure top. Can be easily wiped clean with a damp towel. Dimensions: 18" x 15" x 4.5".



CCS
Tie Dye
Cotton Candy Sky



Padded Medical Bag

753 Poly Bag

 WARNING*

Specifically designed to hold medical instruments and fully lined with water-resistant nylon and protective padding. Features multiple inner pockets and zippered compartments to enable easy storing and securing of instruments. Other features include two exterior compartments, adjustable shoulder strap and handle. Dimensions: 11" x 9" x 5".



Standard Cargo Bag

747-BLK Poly Bag

Nylon bag with a zippered top and adjustable shoulder strap. Features a "hook-and-loop" closure outside pocket. Water resistant lining. Dimensions: 10' x 12" x 6".



Nylon File Folder

739 Poly Bag

Two compartments with a center divider. Hook-and-loop closure. Dimensions: 13" x 11".



Nurse Car-Go Bag

771 Poly Bag

⚠ WARNING*

Designed for the traveling or homecare nurse. Travel mug holder, front mesh pouch, cell phone pouch, removable aneroid compartment and a bottom "hook-and-loop" closure strip holds the bag in place on cloth seats or floor. Inner compartments hold additional equipment. Dimensions: 13' x 6" x 4".



Graduation Lamps

1890 Large (Box)
1891 Small (Box)

Ceramic graduation lamp with a candle.

Dimensions:
Large: 3¼" x 6¼".
Small: 2½" x 2½".



Battery Graduation Lamp

1897 Box

Ceramic lamp with a battery operated candle. AAA battery included. Dim: 3¾" x 6¾".



Dr. Scrubz Bear

1841 Poly Bag

Measures 10" tall.

TEA
Teal



Retractable Tape Measure

45-WHT Slide Pack

Measures in inches (60") and centimeters (150cm).



Four-Color Chart Pens

444 Poly Bag
S444 Slide Pack
444-CYL Cylinder (30)

Features a "no-slip" grip and pocket clip.

Writes in 4 ink colors.



Deluxe Four-Color Chart Pens

445 Poly Bag
S445 Slide Pack
445-AST Cylinder (25)

Features a "no-slip" grip and pocket clip with a handy stylus on the top for use with touch screens.

4 ink colors.



Four-Color Carabiner Pens

446 Poly Bag
S446 Slide Pack
446-AST Cylinder (18)

Features a "no-slip" grip and carabiner clip.

Writes in 4 ink colors.



Liquid Syringe Pens

348-RED Poly Bag
S348-RED Slide Pack
348 Display (60)

WARNING*

Syringe-shaped plastic pen with black ink. Features red liquid inside the barrel.



Standard ID Holder

16 Poly Bag

WARNING*

Displays an ID horizontally. Features a bulldog clip on the back for easy fastening.



Two-Way ID Holder

12 Poly Bag

⚠ WARNING*

Displays a standard size ID either vertically or horizontally. Uses a detachable button snap.



Hard Shell ID Holder

17 Poly Bag

Displays a standard size ID vertically. Made of clear hard plastic. Multiple slots on the top for attaching to a lanyard. A back notch allows easy removal of ID.



Retractable Lanyard

⚠ WARNING*

6053 Hanging Card

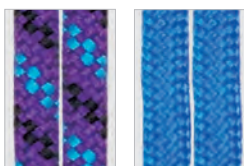
Detachable Retracteze™ on a lanyard with quick release buckle. Extends up to 23". Breakaway safety clasp.



BLK
with Black
Retracteze

BBW
with White
Retracteze

BRB
with Ruby
Retracteze



PUR
with Violet
Retracteze

ROY
with Black
Retracteze

PUR
with Violet
Retracteze

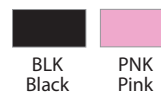


Basic Lanyard & ID Holder

6045 Lanyard Only
S617 Lanyard & ID Holder

⚠ WARNING*

Standard metal badge holder with a bulldog clip and a breakaway clasp. Full set includes the Model 17 Hard Shell ID Holder.



BLK
Black

PNK
Pink



PUR
Purple



Retracteze™ ID Holder

S13 Slide Pack
13-B Poly Bag

⚠ WARNING*

Extends to 23".

Metal clip on back enables easy fastening to apparel.

A portion of the sale of pink ribbon items is donated to the American Cancer Society.



RNA
RN Heart
on Aqua Sea



BLK Black ROY Royal WHT White VIO Violet RUB Ruby



N-BLU Neon Blue N-PNK Neon Pink SVR Silver RBK Rhinestones on Black RPR Rhinestones on Purple



LPK Llamas Pink on Green LPU Llamas Purple on Purple UNB Unicorns Black on Blue UNP Unicorns Black on Pink POB Party Owls on Black



HIM He / Him on White HER She / Her on White THM They / Them on White



PBB Pink Ribbons* PRN Pink Ribbon RN* HBB Hearts on Black BTN Butterflies on Navy CBB Love a CNA



AUT Autism Awareness



RNA RN Heart on Aqua Sea RNP RN Heart on Pink CDN Caduceus Heart on Navy CDR Caduceus Heart on Red CHA CNA Heart on Aqua Sea CHC CNA Heart on Ciel Blue



NRB Nurse Heart on Black NRP Nurse Heart on Purple EKG EKG Heart on Red EKB EKG Heart on Black EPK EKG Heart on Pink EKP EKG Heart on Purple EKW EKG Heart on White

Deluxe Retracteze™ ID Holder

S14 Slide Pack
14-B Poly Bag

⚠ WARNING*

3D molded designs.

Extends to 23". Bulldog clip on back.



DNT Donut



BUG Lady Bug



BEE Bee



BTF Butterfly



CAT Cat



DNT Donut



ELE Elephant



GRF Giraffe



HIP Hippo



KOA Koala



OWL Owl



PAN Panda



PUG Pug



SML Smiley Face



TRT Turtle



UNC Unicorn



WHL Whale



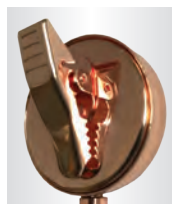
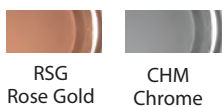
YDK Yellow Duck

Premium Retracteze™ ID Holder

S15 Slide Pack
15-B Poly Bag

Metal construction. Extends to 24". Alligator clip.

⚠ WARNING*



Countertop Display Tub

DIS-TUB Empty Display

Empty plastic countertop display with a screw top. Can fit 70 ID holders.

ID holders not included.



* This product can expose you to chemicals including Nickel which is known to the State of California to cause cancer. For more information go to www.P65Warnings.ca.gov

NEW Two-Tone Scrub Watch

1733 Case

24 hour dial. Step second hands. Water resistant. Soft silicone band. Polycarbonate case. Acrylic lens. Quartz movement. Battery included (SR626SW).



Two-Tone Sports Watch

1731 Case

24 hour dial. Step second hands. 15 second quadrant. Water resistant. Plastic band. ABS plastic case. Acrylic lens. Quartz movement. Battery included (SR626SW).



Tie Dye Scrub Watch

1967 Case

This student scrub watch features a fun tie dye print on the band. 24 hour dial. Step second hands. Water resistant. Plastic band. Plastic case. Plastic lens. Quartz movement with a battery included (SR626SW).



TCB
Tie Dye
Cool
Blue

TDB
Tie Dye
Dark
Blue

TPS
Tie Dye
Pastel

TRB
Tie Dye
Rainbow

Student Scrub Watch

1769 Case

24 hour dial. Step second hands. Water resistant. Plastic band, case and lens. Features Quartz movement. Battery included (SR626SW).



- BLK
Black
- NAV
Navy
- PEW
Pewter
- PUR
Purple
- WHT
White

NEW Ultra-Slim Scrub Watch

1765 Case

Ultra thin profile with a clean, easy to read face. Step second hands. Plastic band, case and lens. Water resistant. Features Quartz movement. Battery included (SR626SW).



- WHT
White

Melrose - Premium Watch

1925-RGW Case

Rose gold finish with a brushed steel face. 24 hour dial with 12 stone indexes. Step second hands. Genuine leather band with nubuck strap back. Features Quartz movement. Battery included (SR626SW).



Easy Reader Watch

1736 Case

Genuine leather band. 24 hour dial. Step second hands. Chrome case. Glass lens. Water resistant. Features Quartz movement. Battery included (SR626SW).



Classic Watch

1700 Case

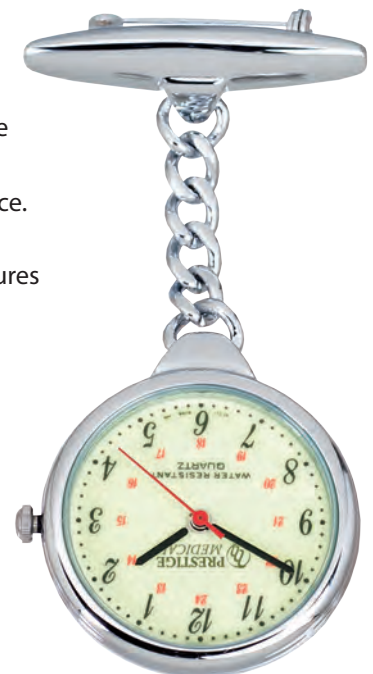
White leather band. Chrome case. Glass lens. 24 hour dial. Step second hands. Water resistant. Features Quartz movement. Battery included (SR626SW).



Glow-In-The-Dark Lapel Watch

1741 Case

Chain band. Chrome case. Glass lens. Glow-in-the-dark face. 24 hour dial. Step second hands. Features a locking pin back. Water resistant. Quartz movement. Battery included (SR626SW).



Insignia Tacs

Pillowbox Case

⚠ WARNING*

Cloisonné insignia tacs. Plastic clutch back. Two per package.



90
Caduceus



91
RN Caduceus



93
LPN Caduceus



910
Registered
Nurse



911
Bachelor of
Science Nursing



930
Licensed
Practical Nurse



975
Certified
Nursing Assistant

Professional Tacs

Pillowbox Case

⚠ WARNING*

Cloisonné tacs. Plastic clutch back. One per package.



992 *
Pink Ribbon



996
Tooth Character



905
Autism



980
Cardio Pulmonary
Resuscitation



984
Gold Nightingale
Lamp



990
Large Gold
Caduceus

A portion of the sale of all pink ribbon items is donated to the American Cancer Society.

Badge Tacs

Pillowbox Case

⚠ WARNING*

Cloisonné badge tacs. Plastic clutch back. One per package.

A portion of the sale of all pink ribbon items is donated to the American Cancer Society.



9400 *
Pink Ribbon - Silver



9390
Caduceus



9310
Registered Nurse



9326
Certified Nursing
Assistant



9346
We Care

A portion of the sale of all pink ribbon items is donated to the American Cancer Society.

Magnetic Pink Ribbon Badge Tac

9412 Pillowbox Case

Two-piece magnetic back eliminates piercing of garment. Crystal studded face. One per package.

A portion of the sale of all pink ribbon items is donated to the American Cancer Society.



Professional Cloisonné Emblem Pins

⚠ WARNING*



Individually handcrafted with an artisan's attention to detail. Cloisonné is an old-world metal working process that utilizes gold or silver wire to create shapes which are then filled with enamel, crystals, or precious metals and fired in a kiln at extremely high temperatures. All feature a locking pin back. Listed in alphabetical order. Comes in a pillowbox case. One per package.



2080
Advanced Cardiac
Life Support



2089
Anesthesia
Assistant



2011
Bachelor of
Science Nursing



1020
Caduceus



1010
Caduceus
(Filigreed Heart)



1080
Cardio Pulmonary
Resuscitation



1014
Certified
Acupuncturist



1087
Certified Emergency
Medical Technician



1073
Certified Medical
Assistant



1074
Certified Medical
Assistant



1076
Certified
Nurses Aide



1071
Certified Nursing
Assistant



1075
Certified
Nursing Assistant



2075
Certified Nursing
Assistant, Level II



1037
Certified Pharmacy
Technician



1009
Certified Registered
Nurse Practitioner



1096
Dental
Assistant



2026
EKG Technician



1090
Emergency
Medical Technician



1086
Emergency Medical
Technician



2087
Emergency
Medical Technician



1091
First
Responder



1015
Holistic
Medicine



1072
Licensed
Nursing Assistant



1023
Licensed
Practical Nurse



1013
Licensed
Practical Nurse



1033
Licensed
Practical Nurse



1053
Licensed
Practical Nurse



1022
Licensed
Vocational Nurse



1032
Licensed
Vocational Nurse



1042
Licensed
Vocational Nurse



1008
Massage
Therapist



2020
Master of Science
Nursing



1006
Medical
Assistant



2021
Nurse
Practitioner



1007
Nursing
Assistant



1084
Paramedic



1038
Patient Care
Assistant



2024
Patient
Service Worker



1016
Pediatric Advanced
Life Support



1035
Pharmacist Rx



1046
Pharmacist Rx



2035
Pharmacy
Technician



1058
Phlebotomy
Technician



2025
Physical Therapist
Assistant



1089
Registered Dental
Hygienist



1066
Registered
Medical Assistant



1021
Registered
Nurse



1011
Registered
Nurse



1001
Registered
Nurse



1031
Registered
Nurse



1017
Registered
Nurse Practitioner



2023
Registered
Practical Nurse



1048
Respiratory
Therapist



2012
Star of Life



1093
State Tested
Nursing Assistant



2088
Surgical
Technician



2004
Usher



1049
Veterinary
Medicine



1050
Veterinary
Technician



Custom Cloisonné Emblem Pins are Available

Please contact customer support for details

Floor Display

Model: FLOOR DISPLAY 2017

Organize and showcase your Prestige Medical® products with our three-sided floor display. Metal frame construction with attractive blond wood dash board. Designed to accommodate a large assortment of merchandise. The perfect solution for retail stores with limited wall space.

- 5' 7" tall by 1' 10" wide
- 3 sides of dash board
- 17 slat rows on each side
- Adjustable floor levels
- Includes 44 (8") peg hooks

Contact customer support about receiving this display for free.



Countertop Display

Model: DIS-COUNTER

This metal wire display is designed to hold socks, lanyards, and watches.

- 17" tall by 12" wide
- Four 4 inch hooks

Contact customer support about receiving this display for free.



Countertop Watch Display

Model: Watch Display 2018

Features a locking back with a key. Our watches can be displayed either in or out of their individual watch cases.

- 19" tall x 12" wide x 4" deep
- 3 shelves with 4 slots
- Holds 12 watches
- Locking door with key
- Made of acrylic
- Includes 12 watch brackets



Contact customer support about receiving this display for free.



Stethoscope Warranty



Lifetime Warranty

Prestige Medical stethoscopes are warranted against defects in manufacturing during normal use by the original purchaser for the lifetime of the stethoscope (*excludes certain models, see below for details*). This lifetime warranty excludes the stethoscope tubing which is warranted for a period of 5 years from the date of purchase. Any stethoscope return must receive prior authorization by contacting customer support at cs@prestigemical.com or your nearest Prestige Medical dealer.

Free Lifetime Replacement Parts

Prestige Medical stethoscopes include Free Lifetime Replacement Parts (*excludes certain models, see below for details*). The parts covered in this plan include: Eartips (pair), diaphragm, diaphragm retaining ring, non-chill ring, and bell sleeve. Free replacement parts are limited to one of each specified part per stethoscope per year. Activating this warranty is done by registering on our website at www.prestigemical.com.

Models : 100, 103, 104, 105 and 110 - All Basic Series stethoscopes feature a one year warranty.

Aneroid Sphygmomanometer Warranty



Lifetime Gauge Calibration Warranty

The indicator needle should always rest within the rectangular calibration area (please note that the gauge is still fully calibrated if the needle is on the line). If the manometer gauge is out of adjustment during normal use, Prestige Medical® will replace the gauge for the lifetime of the unit (*excludes certain models, see below for details*).

5 Year Warranty

Nearly all Prestige Medical aneroid sphygmomanometers are warranted against defects in manufacturing during normal use by the original purchaser for 5 years (*excludes certain models, see below for details*).

Models: 79, S79 - 10 year warranty on the gauge and a 5 year warranty on the unit.

Models: 70, A1-103, A1-104, A1-105, A1-110 - One year warranty on both the gauge and the unit.

Custom Combination Kits

If you don't see a combination kit that meets your needs, simply create your own. We offer hundreds of possible combinations.

Contact customer support for more details.



Prestige Medical® Return Policies

To ensure prompt handling of your returns please follow the guidelines below:

- Returns must be sent to us freight pre-paid
- No returns without prior authorization
- The name and address of your store must be enclosed inside the box
- Written reason for the return must also be enclosed inside the box

Note: Our returns department will make a determination of whether to issue credit, replace or repair. We also reserve the right to deduct a 15% restocking charge (up to 50% for custom kits).

3M® Littmann® Sales and Returns

3M Littmann® Sales

Littmann® conditions: Distributor / Buyer / Customer agrees to purchase Littmann® products for sale and / or re-sale to customers within the 50 states of the United States and Puerto Rico only.

3M
Littmann®
Stethoscopes



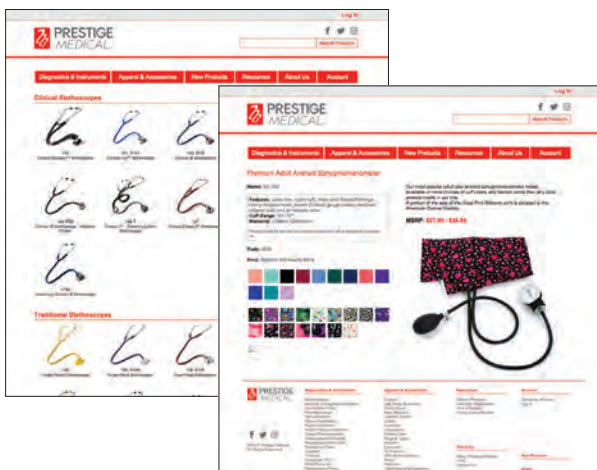
3M Littmann® Returns

If a Littmann® stethoscope or replacement part is damaged upon receipt of your order, you may return it directly to Prestige Medical®. If you have sold a Littmann stethoscope or replacement part to a customer (or end user), it MUST be returned by the end user directly to Littmann®.

Littmann Repairs & Refurbishing:
1-800-292-6298

Littmann Manufacturing Defects:
1-800-228-3957

Prestige Medical® Website



Online shopping has never been easier

- Designed specifically for retailers
- Place orders 24 hours a day, 7 days a week
- Web exclusive weekly deals
- Track order status
- Review your invoices and order history
- Stay updated on new products
- Create a favorites list
- See current backorder status
- Images for all products, colors and prints
- Closeout and overstock items

Visit us online today.

www.prestigemedical.com

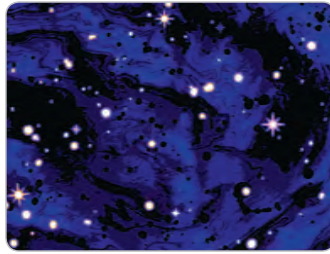
Print Swatches



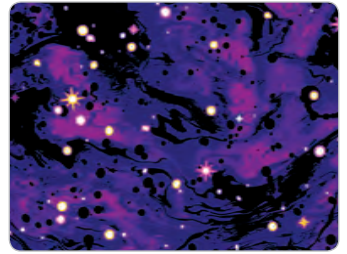
BTG
Butterflies Grey



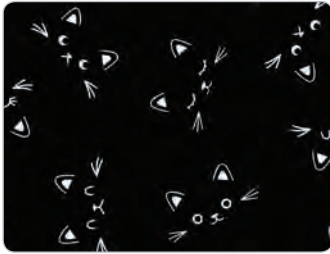
BTN
Butterflies Navy



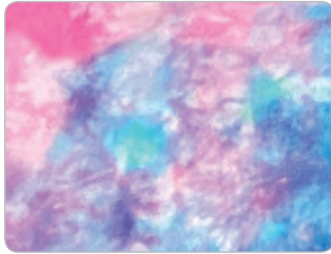
GXB
Galaxy Blue



GXP
Galaxy Purple



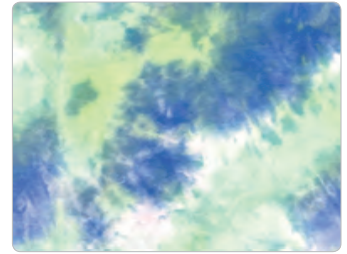
CBW
Cats Black & White



CCS
Tie Dye Cotton Candy Sky



SNT
Tie Dye Supernova



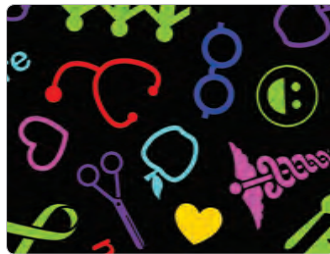
TPR
Tie Dye Tropical Reef



LPK
Llamas Pink



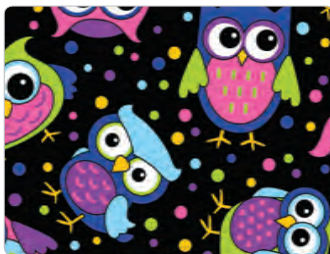
LPU
Llamas Purple



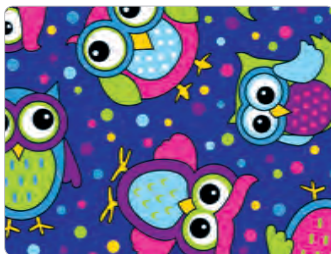
MSB
Medical Symbols Black



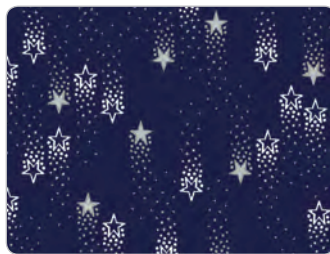
MSP
Medical Symbols Pewter



POB
Party Owls Black



POR
Party Owls Royal



SSN
Shooting Stars Navy



WAC
Woody Animals Cream



UNB
Unicorns Black



UNV
Unicorns Violet

To view virtual product samples in their respective colors and prints, please visit us online at www.prestigemedical.com

INDEX

Aneroid Sphygmomanometers	24–29, 33	ID Tags (Stethoscope)	18
Aneroid Sphygmomanometer Kits	30–31, 33	Jewelry	18–19, 71–73
Apparel	50–55	Lab Coats	50
Badge Holders	64–67	Lanyards	65
Badge Tacs	71	Littmann® Stethoscopes and Products	20–23
Bags (Doctors / Nurses)	60–63	Measuring Tools	40–41, 63
Basics (Stethoscopes, Aneroids, Kits)	32–33	Medimeter™	41
Bears (Plush Gifts)	63	Med Sleeves™	50
Cap Case	55	One-Hand Aneroid Sphygmomanometers	29
Carry Cases	60	Online Ordering	76
CharMED™ Accessories	18	Organizers	58–59
Clear Sound Stethoscopes	15	Otosopes	39
Clinical Series Combination Kits	31	Patches (Custom)	55
Clinical Series Stethoscopes	8–11	Pens	64
Compression Socks	52–55	Penlights	38–39
Consultation Jackets	50	Pins	71–73
CPR Masks	42	Pocket Organizers	58–59
Custom Combination Kits	25, 75	Prestige Basics (Stethoscopes, Aneroids, Kits)	32–33
Digital Blood Pressure Monitors	34–35	Print Swatches (Cuffs & Carrying Cases)	77
Digital Thermometers	36	Pulse Oximeters	34
Displays (Merchandise)	75	Retracteze™	66–67
Disposable Stethoscope	15	Rubber Goods	42
Dissection Kits	49	Scissors and Instruments	44–49
Dual Head Stethoscopes	8–15, 20–23, 32	Shirts	51
Eartips	16	Single Head Stethoscopes	14–15, 22–23, 32
EKG Calipers	40	Single-Hand Aneroid Sphygmomanometers	29
EMS (EMT) Products	42–43	Socks	52–55
Electronic Stethoscopes	22	SpragueLite® Stethoscopes	11, 13, 32
Emblem Pins	72–73	Sprague-Type Stethoscopes	11–13, 32
Eye Charts	41	Stethoscopes	6–15, 20–23, 32
Eyewear	56–57	Stethoscope Parts & Accessories	16–19
Forceps / Hemostats	48	Stethoscope Eartips	16
Gait Belts	43	Tacs	71
General Information and Policies	75–76	Teaching Stethoscopes	10, 12, 23
Gifts	63	Thermometers (Digital)	35
Gloves	50	Tote Bags	60–61
Goggles / Eyewear	40–41	Transfer Belts	43
Goniometers	46–47	Tuning Forks	40
Graduation Lamps	63	T-Shirts	51
Hammers (Neurological)	40	Veterinary Stethoscopes	10, 22
Hip Clip (Stethoscope Holder)	17	Watches	68–70
Home Health Products	34–37	Warranty Information	75
ID Holders	63–67	Web Ordering	76